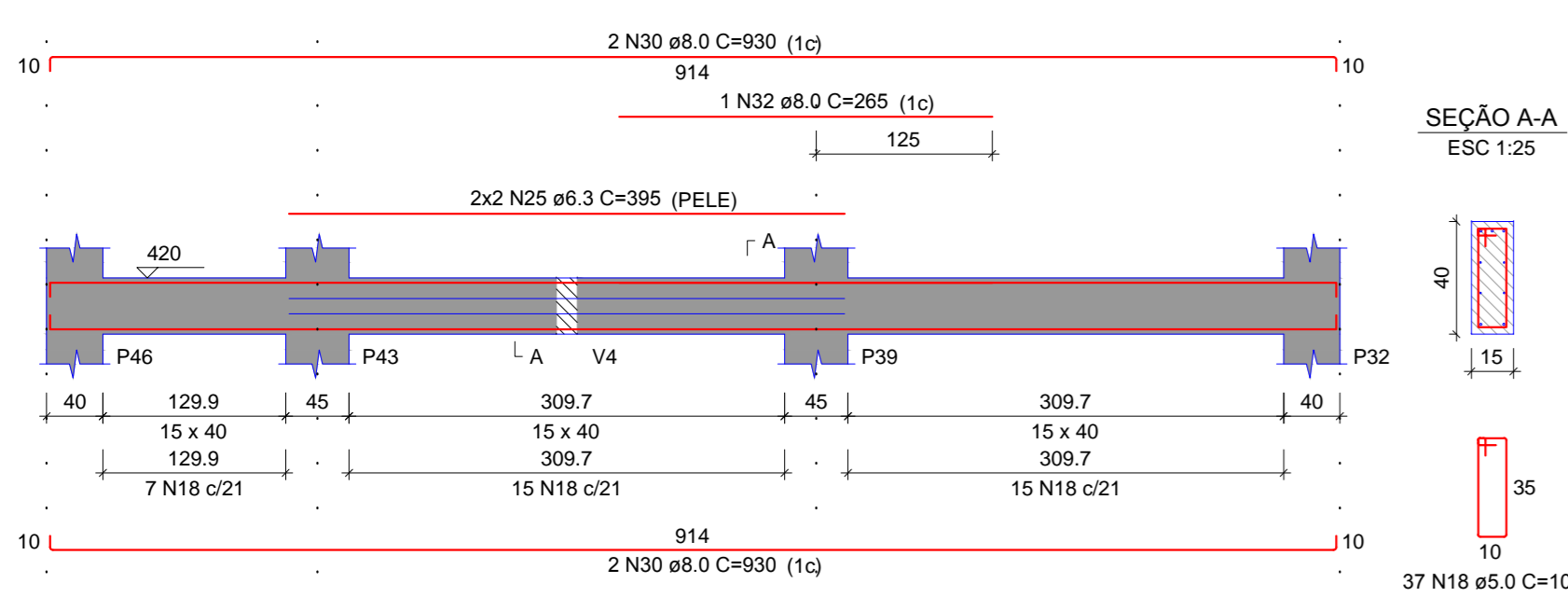
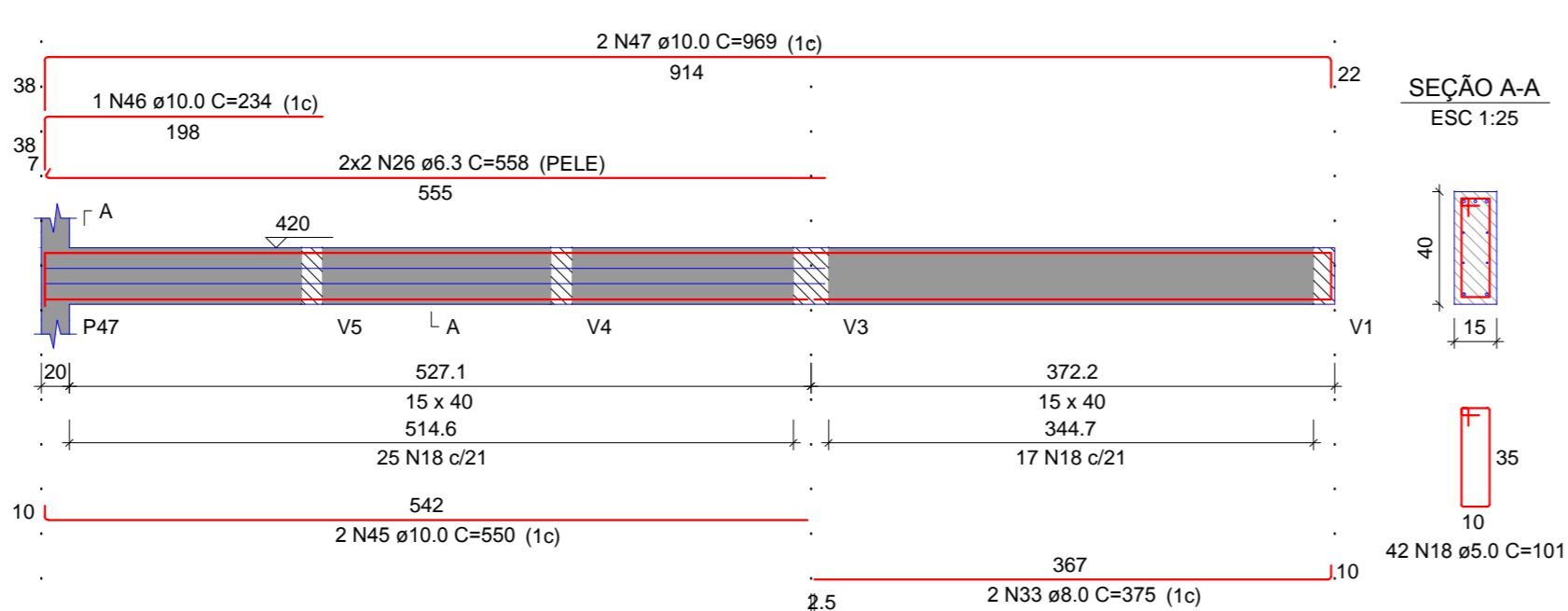


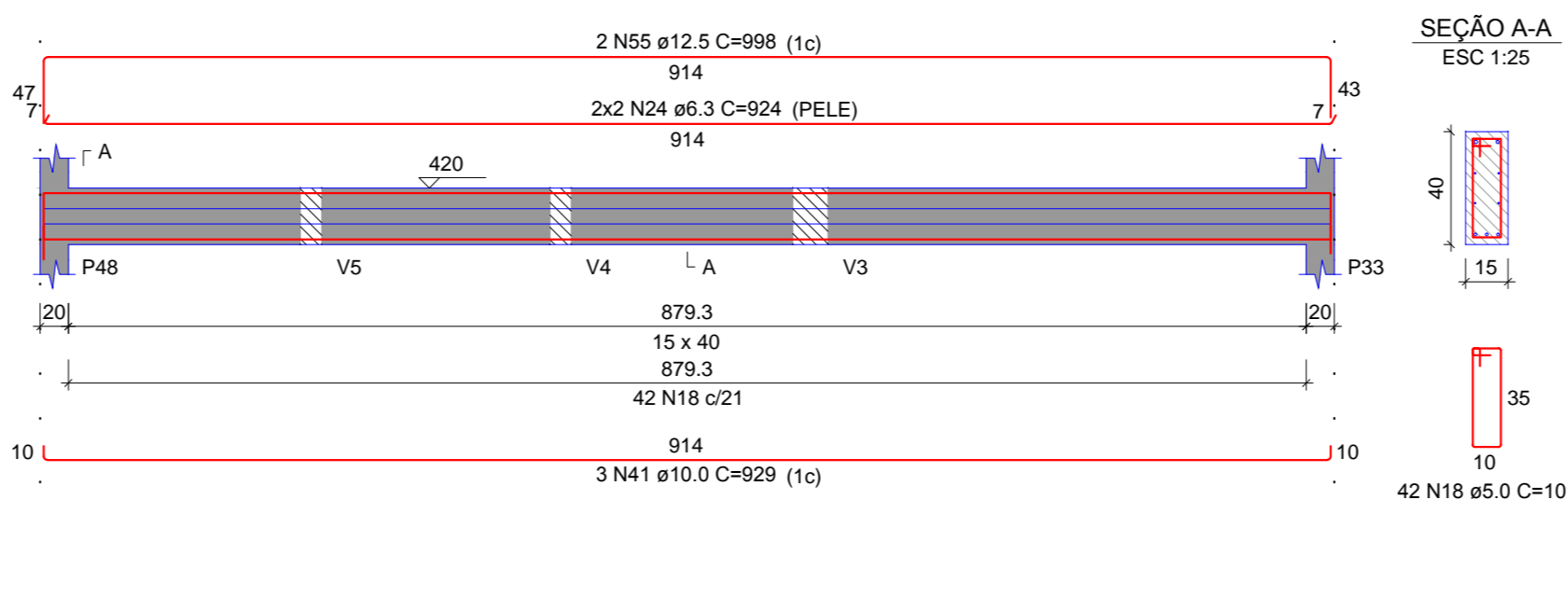
V7 (15 x 40)



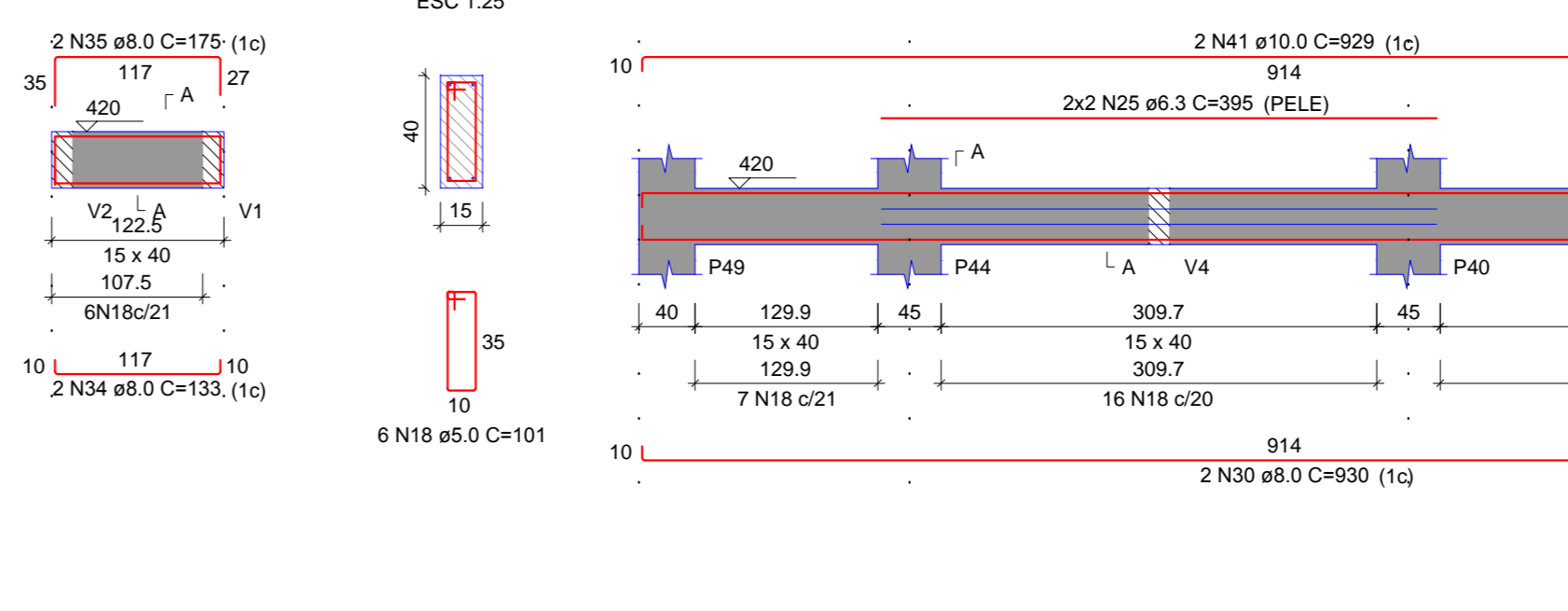
V8 (15 x 40)



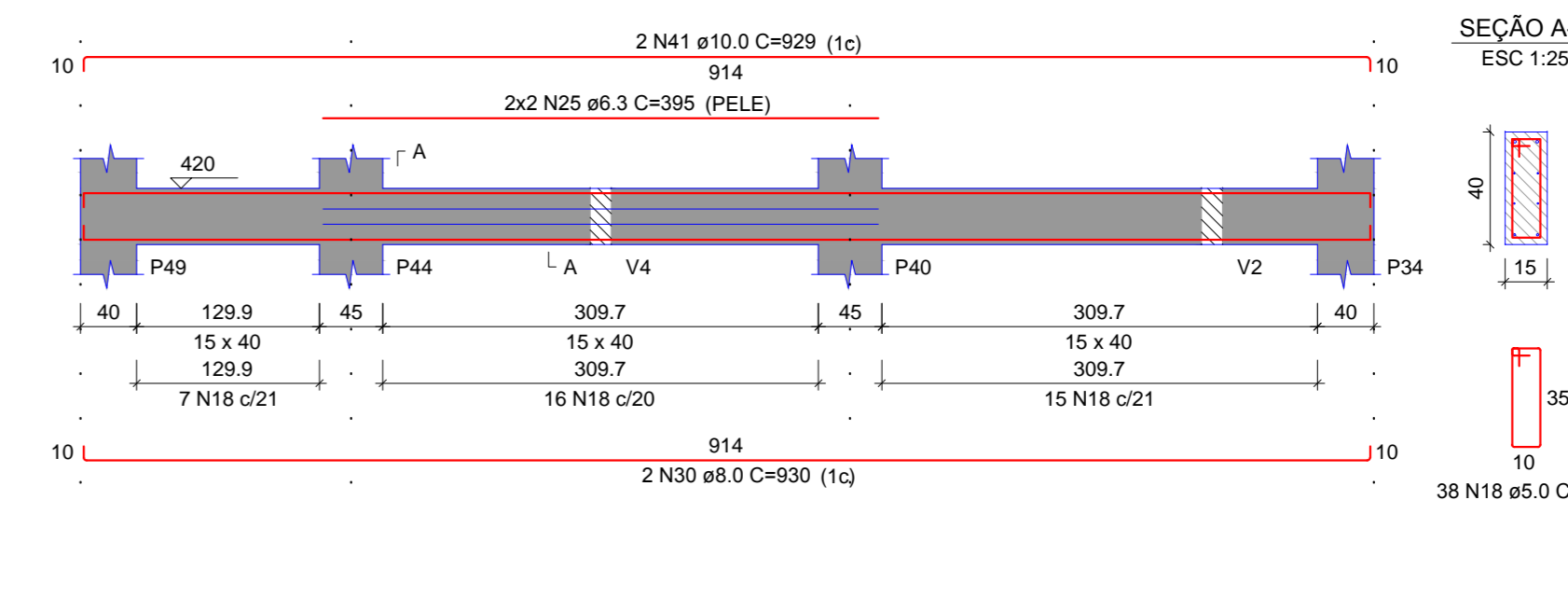
V9 (15 x 40)



V10 (15 x 40)

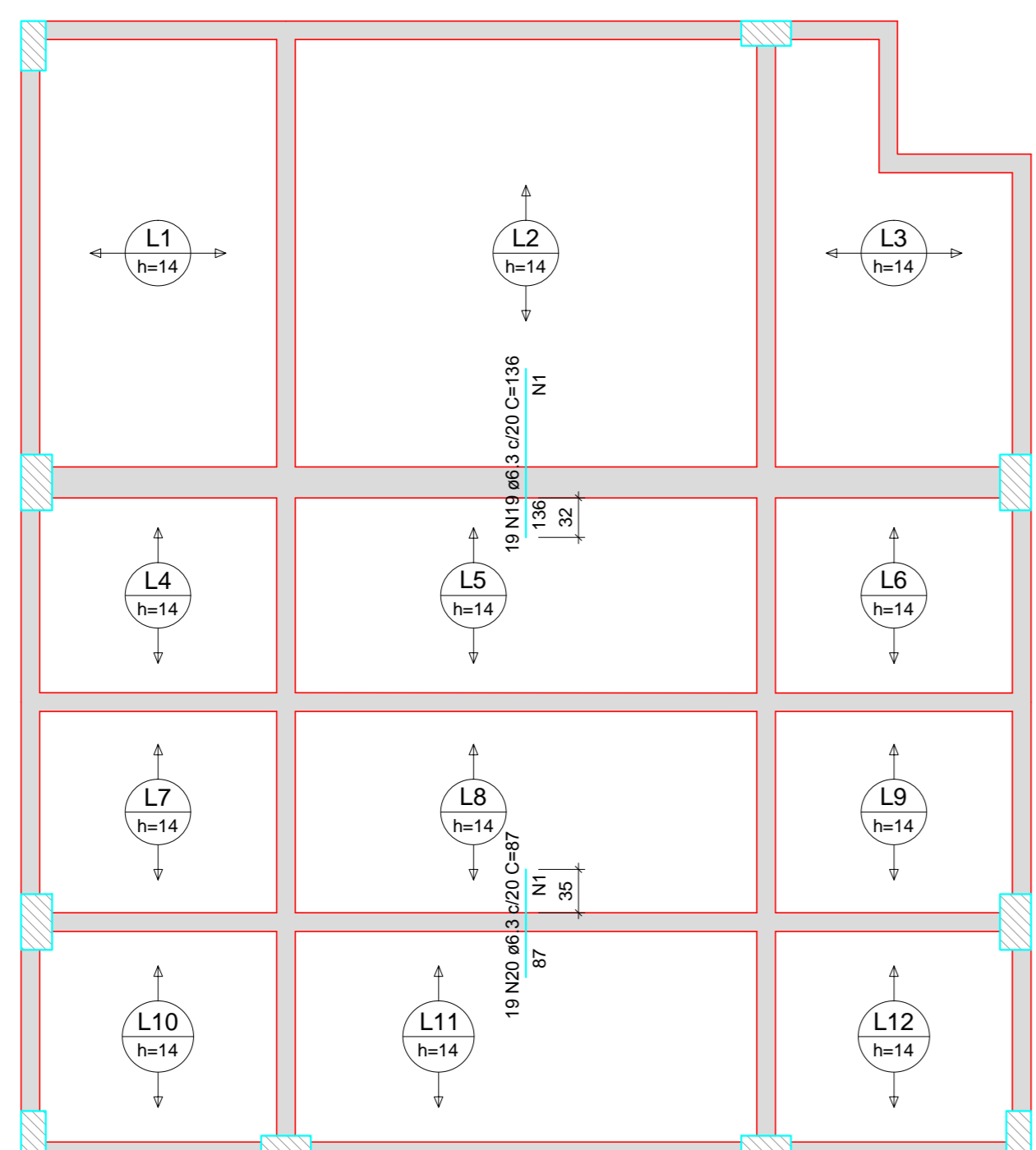


V11 (15 x 40)

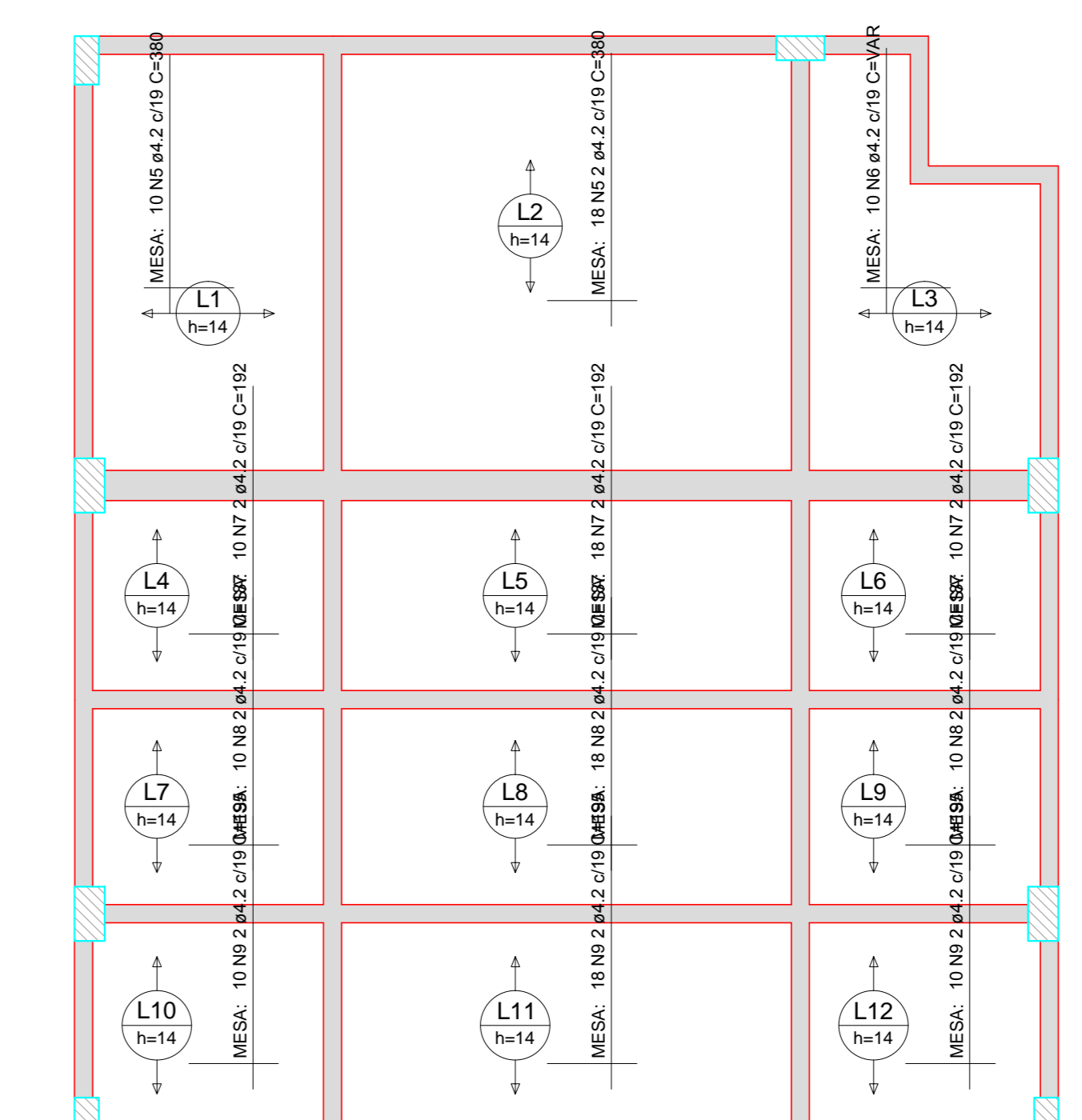
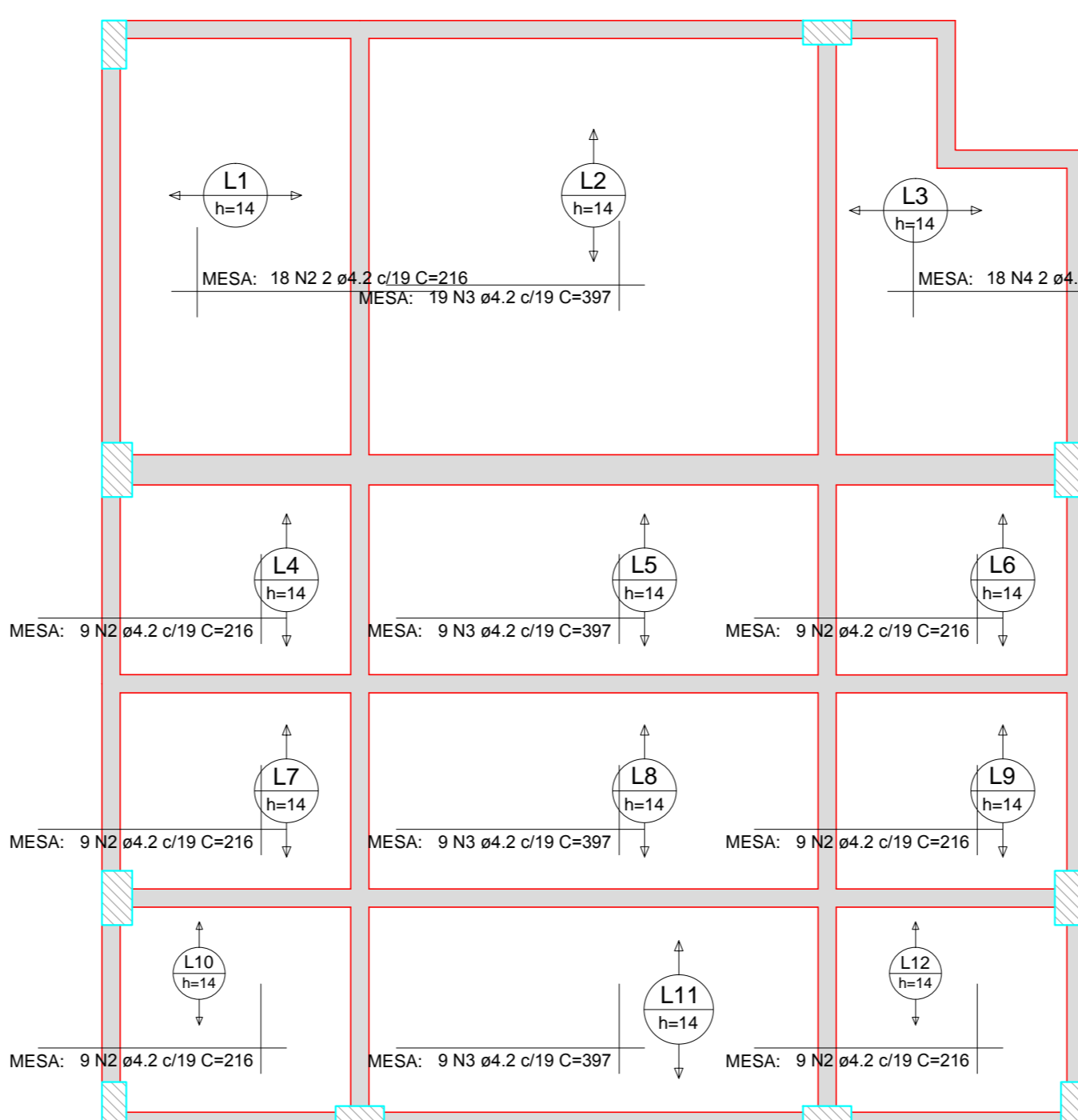


RESUMO DO AÇO				
CASO	DIAM (mm)	C-TOTAL (m)	QUANT + 0% (Barras)	PESO + 0% (kg)
1	8.0	274.1	23	67.1
2	10.0	186.1	16	73.4
3	12.5	422.3	36	260.4
4	16.0	252.2	22	243.0
5	18.0	786.9	36	856.8
6	20.0	965.4	-	148.3
<b>PESO TOTAL (kg)</b>				<b>1483.0</b>
<b>CASO</b>		<b>643.8</b>		
<b>CASO</b>		<b>233.9</b>		

Volume de concreto (C-25) = 13.91 m³  
Área de forma = 143.98 m²



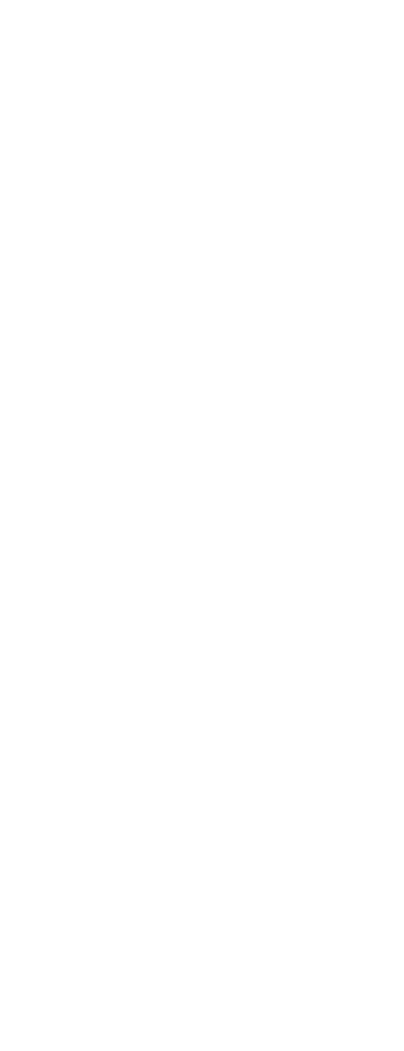
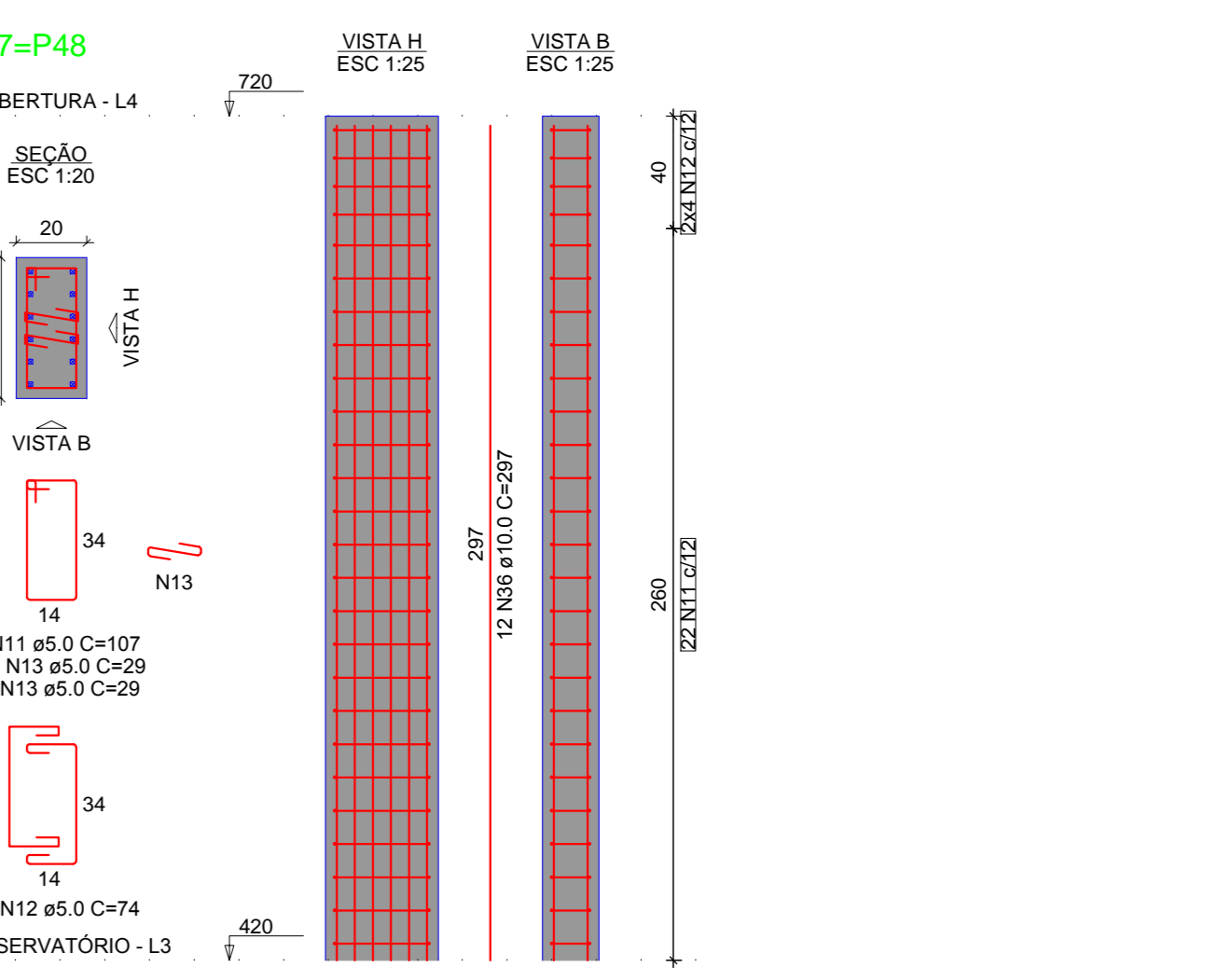
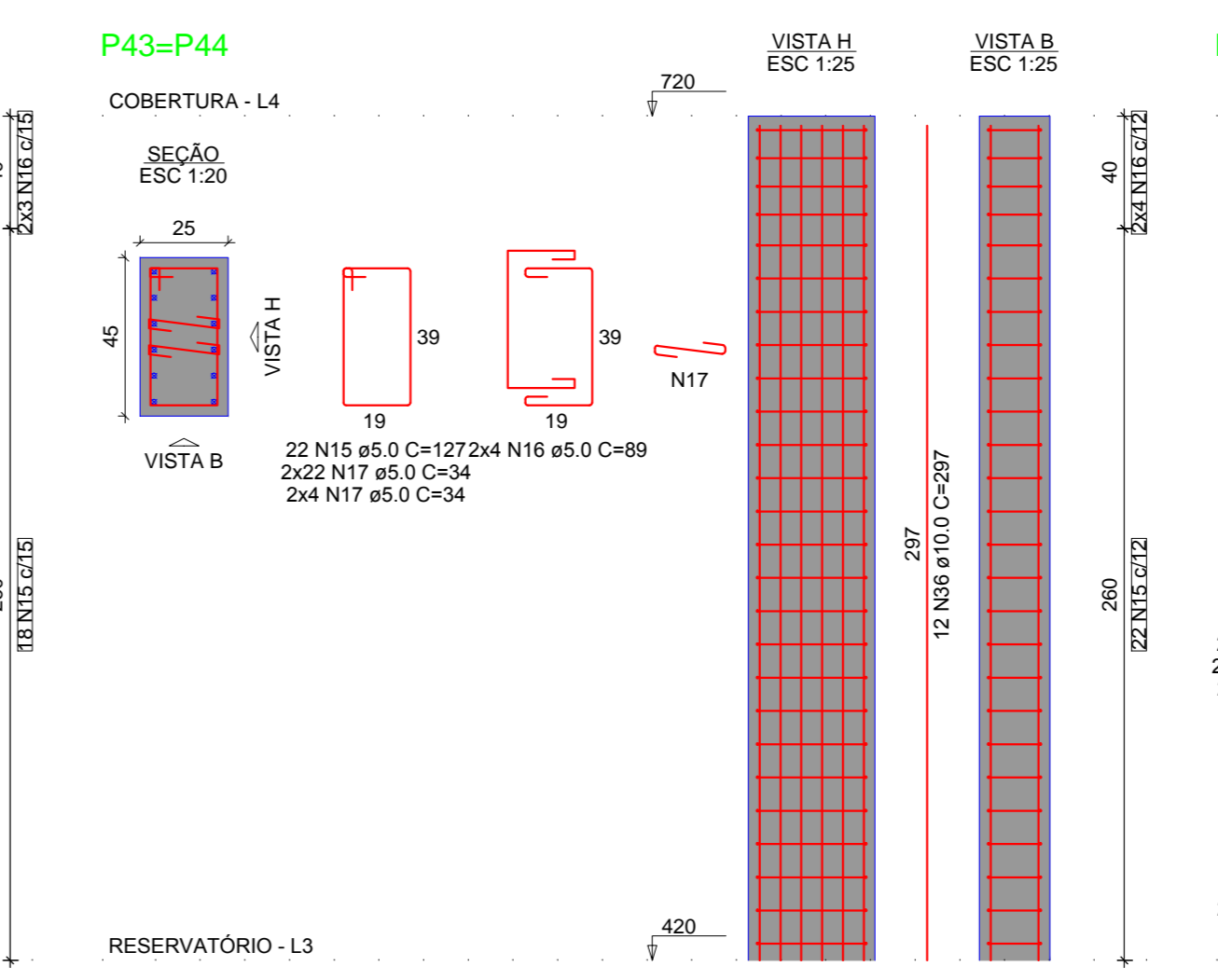
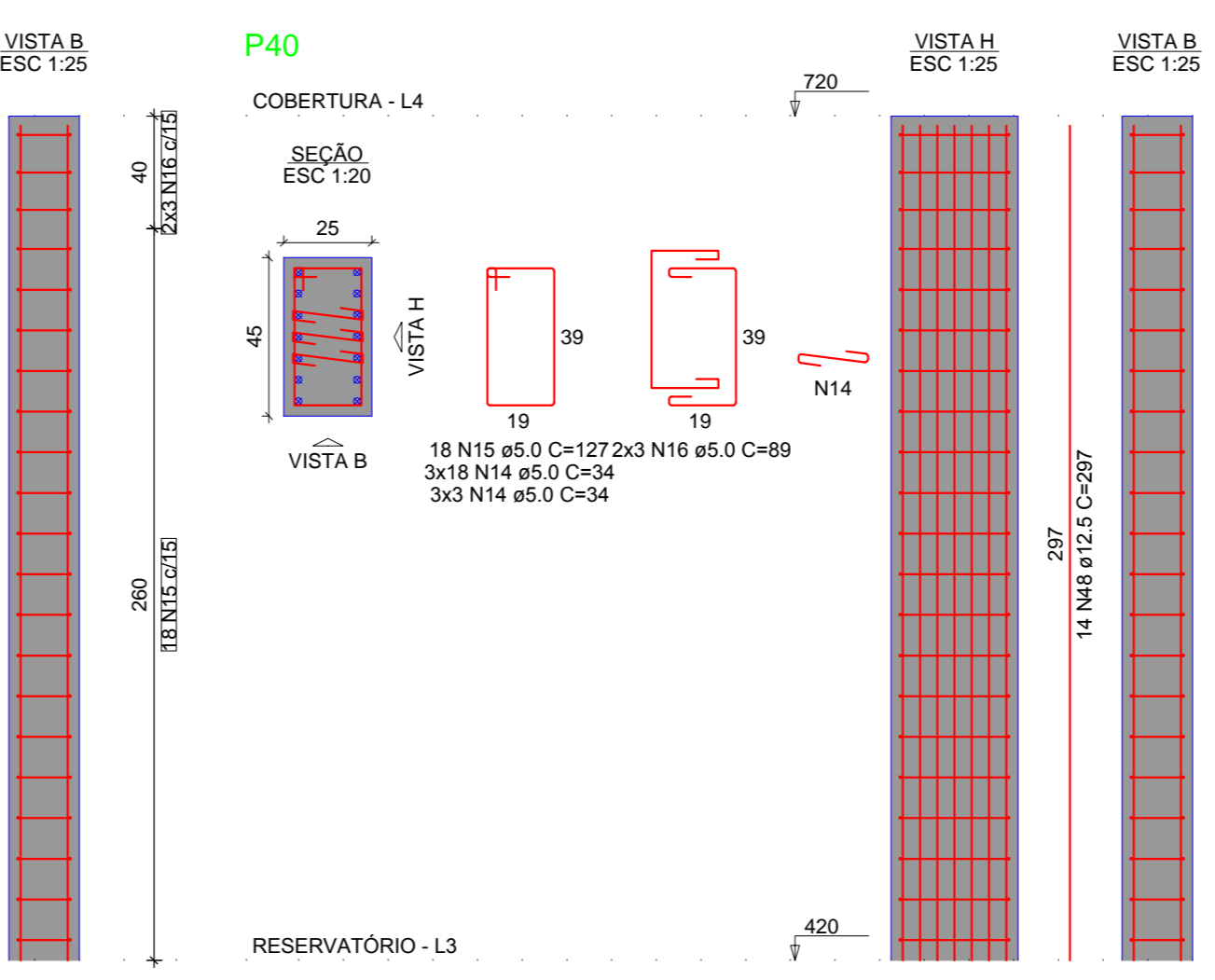
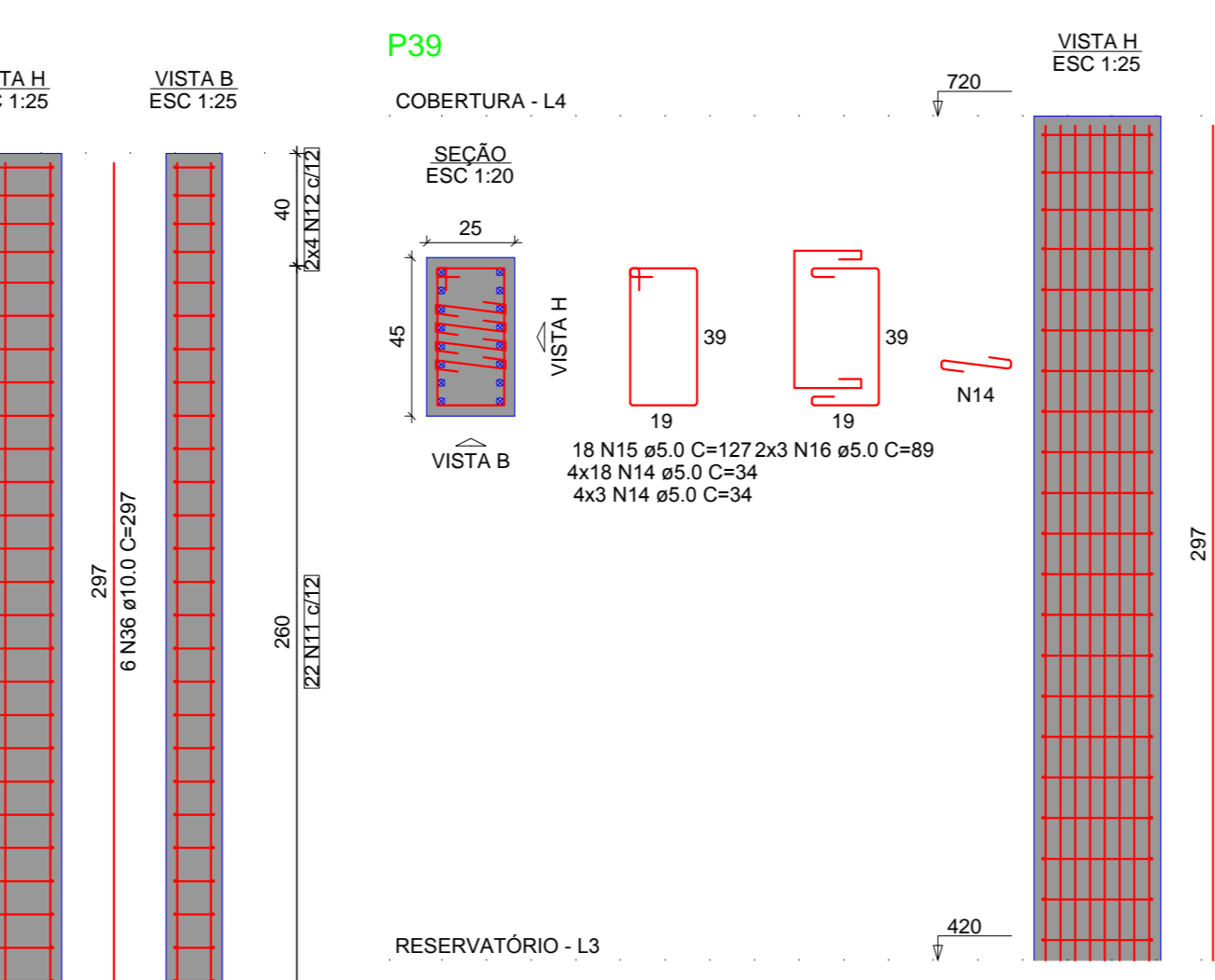
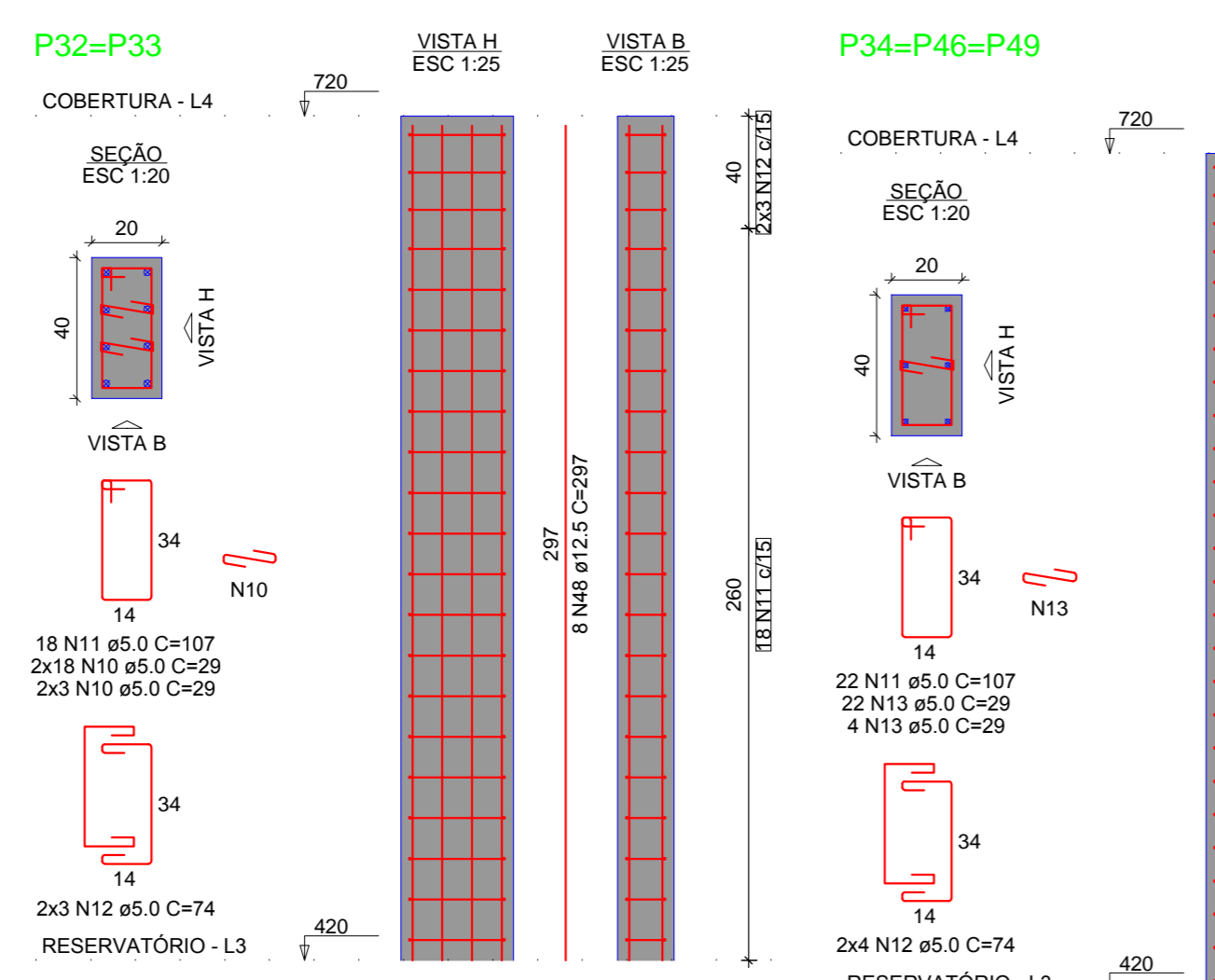
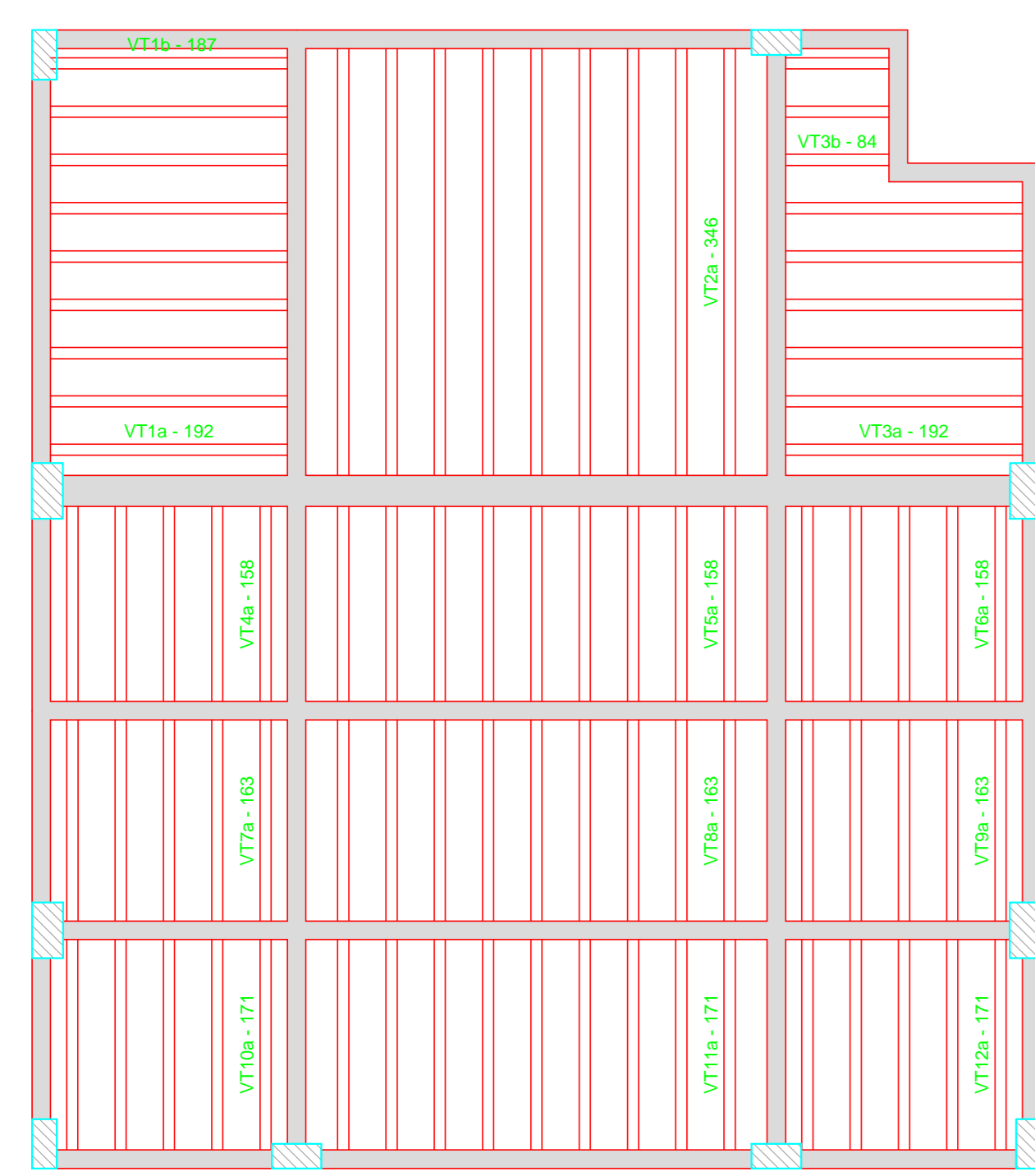
Armaduras de distribuição	
Armadura	Armadura de distribuição
N19	9 N1 ø4.2 ç19 C=387
N20	6 N1 ø4.2 ç19 C=387



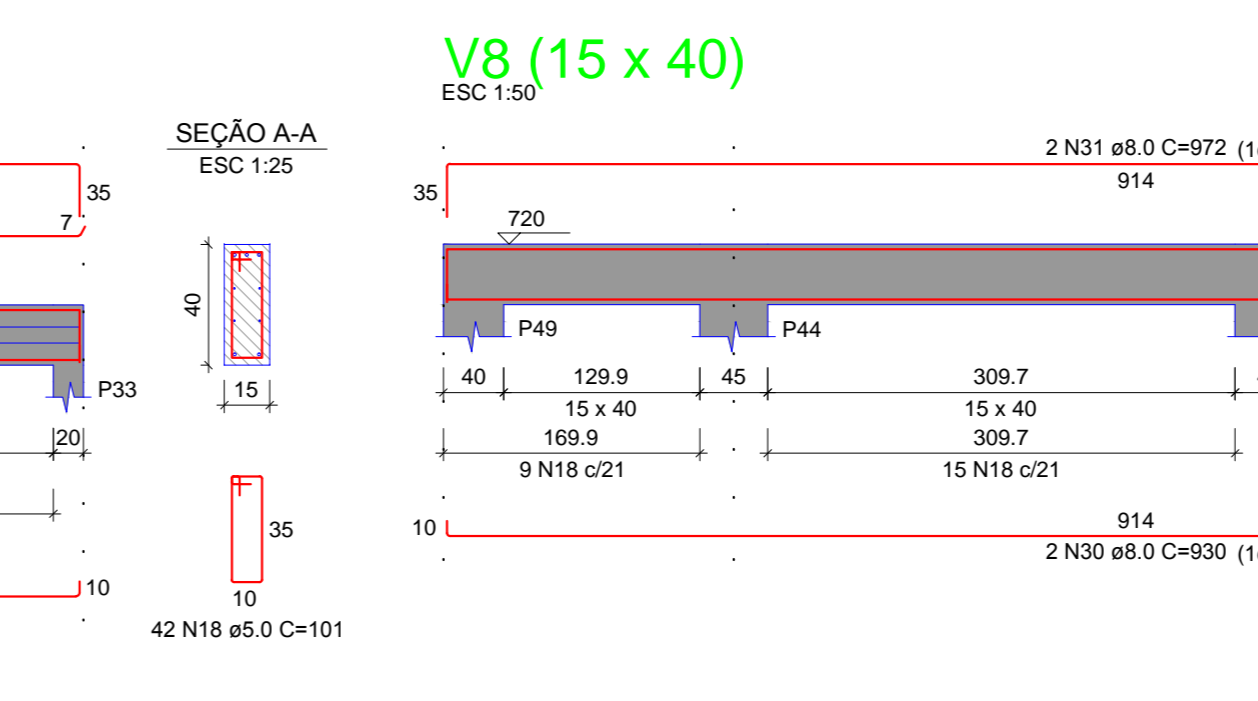
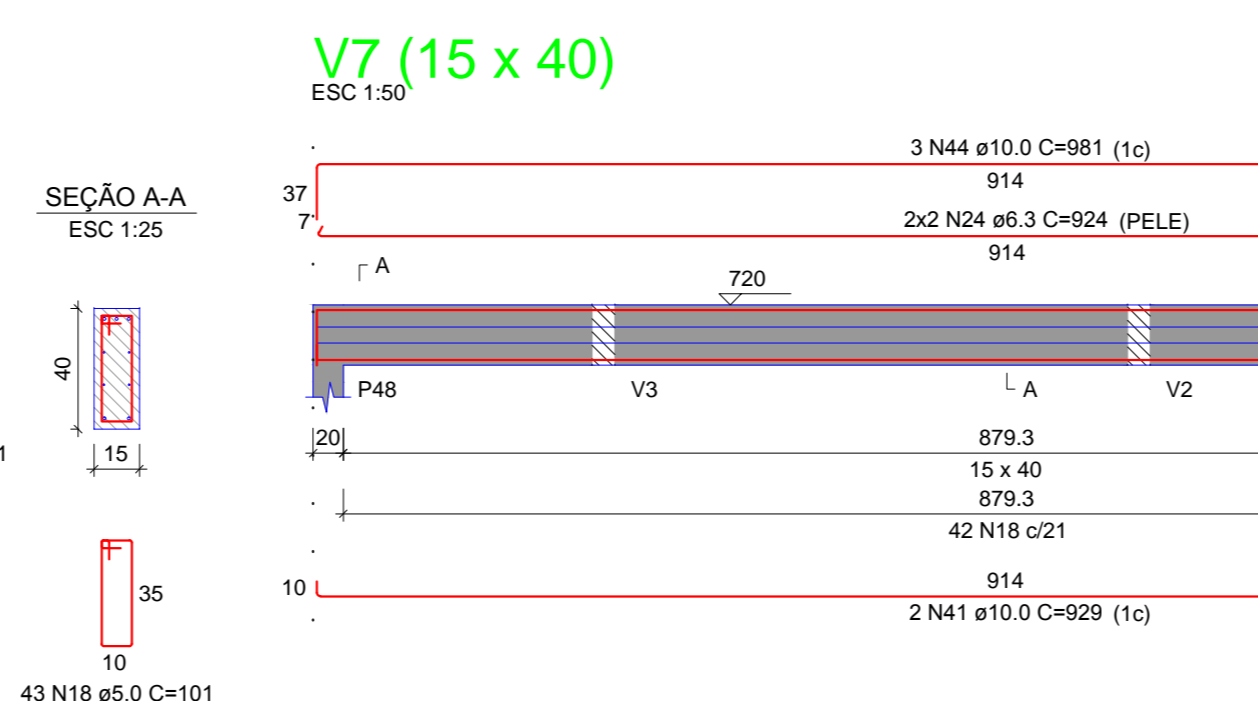
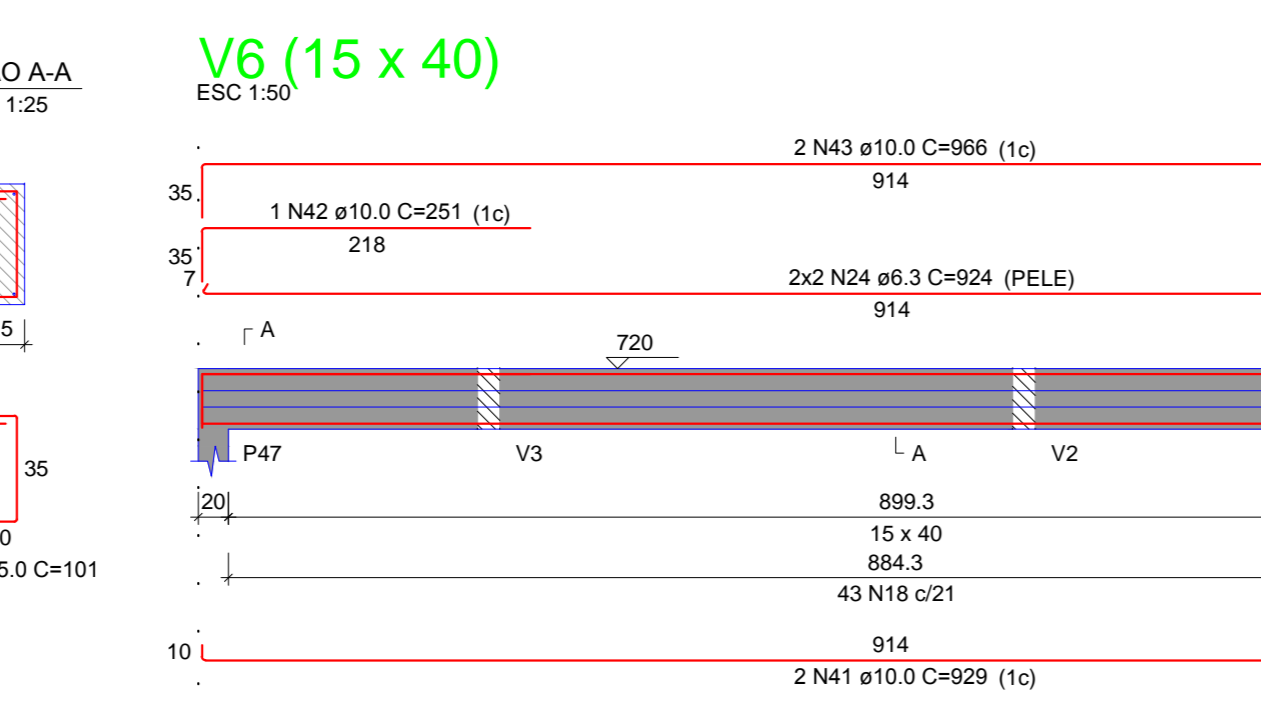
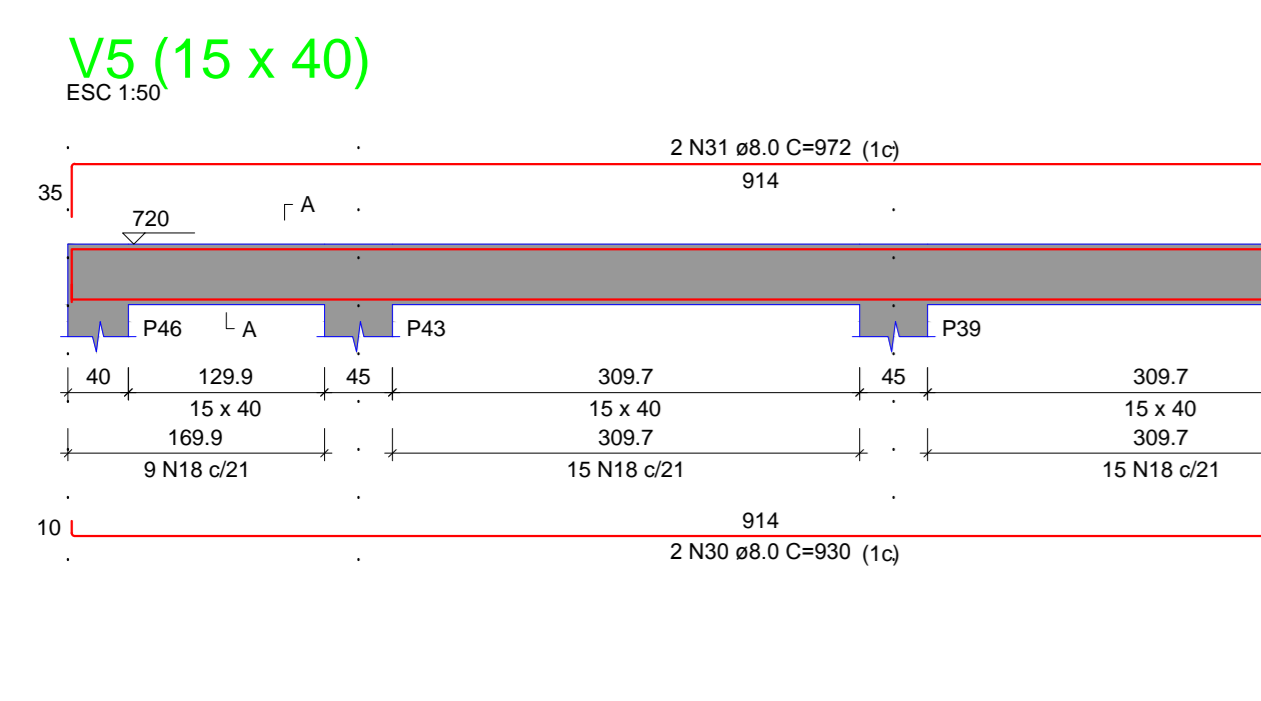
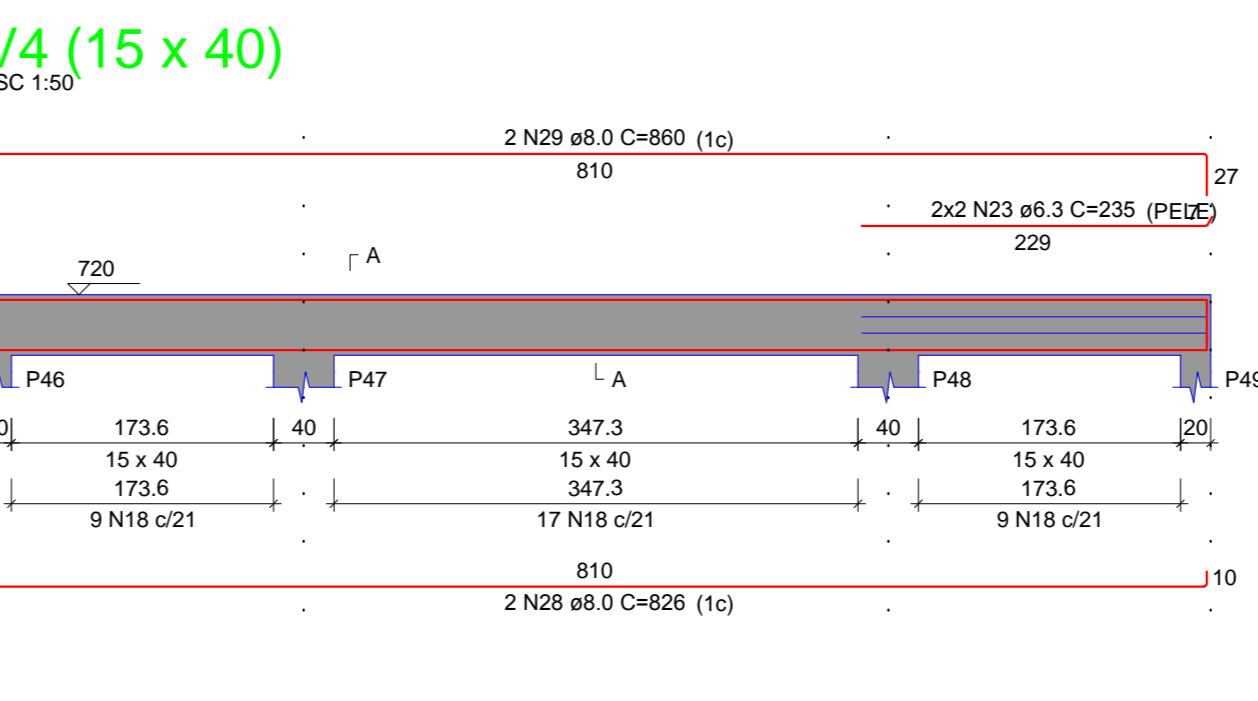
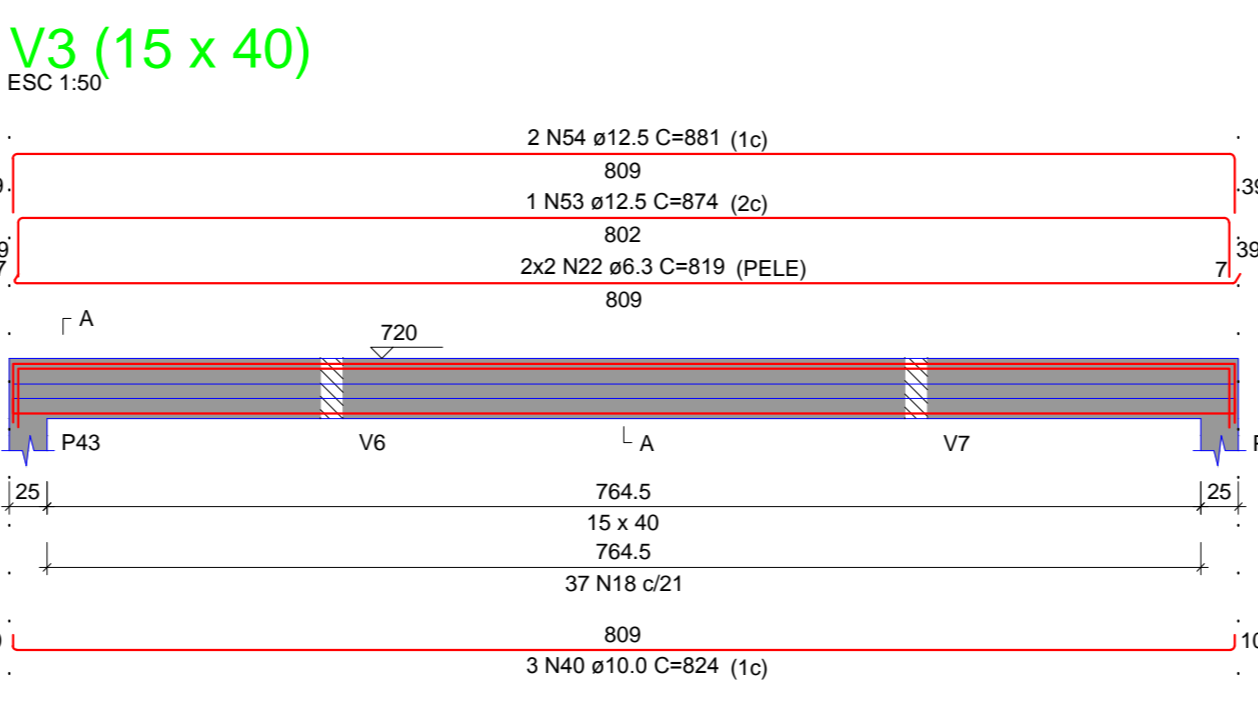
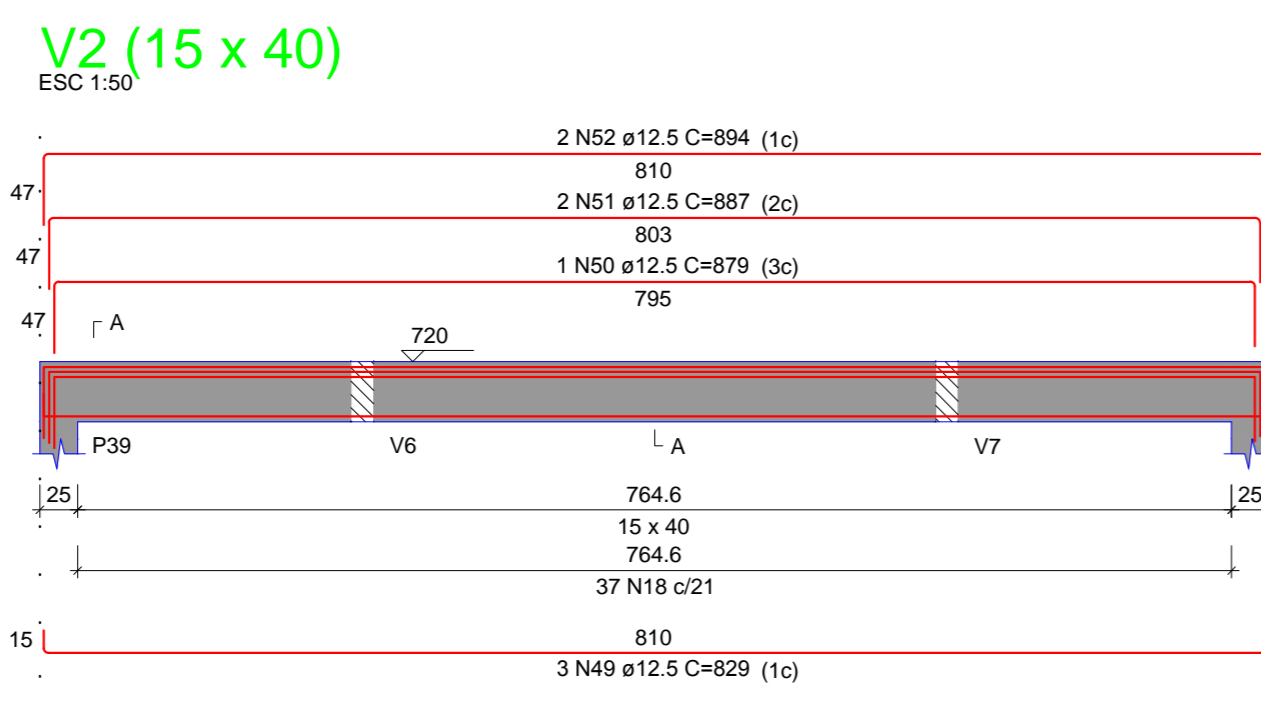
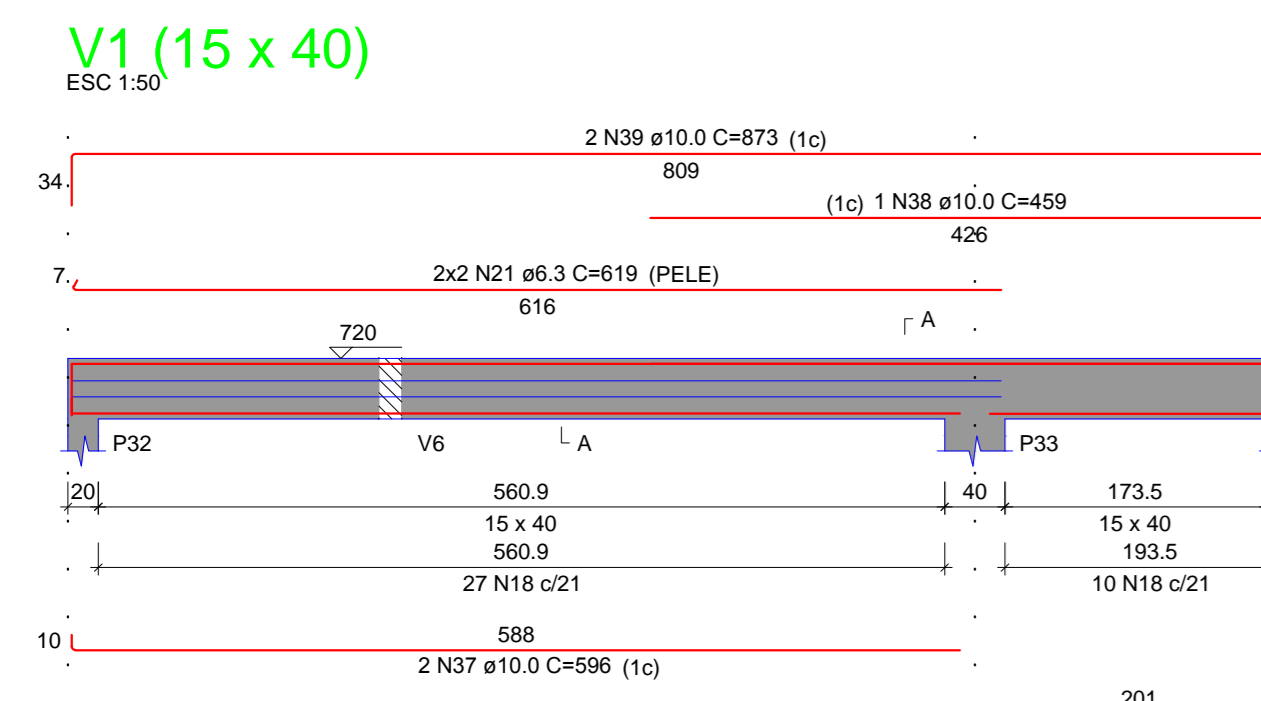
Armação negativa das lajes do pavimento Reservatório (Eixo Y)

Armação positiva das lajes do pavimento Reservatório (Eixo X)

Armação positiva das lajes do pavimento Reservatório (Eixo X)



Planta de vigotas pré-moldadas



Observação:

Data de Revisão 01: 27/09/2021

Data de entrega: 06/09/2019

SECRETARIA DE PLANEJAMENTO E OBRAS	<p>PREFEITURA DO MUNICÍPIO DE LAGES PREFEITO ANTONIO CERON</p>	
SECRETÁRIO: JOÃO ALBERTO DUARTE		
DIRETOR: ROBERTO C. PROVENZANO	OBRA:	
PROJETO: VINICIUS B BERNARDI CREA-SC 128242-7	LES BARRO CAÇA E TIRO / VILA NOVA	
DESENHO: LUCAS ENGERS DA SILVA	Descrição: Reservatório: Vigas e Lajes Par. Cobertura: Fibras e Vigas	ÁREA: 478.8m² DATA: setembro/2021
TOPOGRAFIA:		
CONFERIDO: ARQUIVO:		
APROVADO:		
FORMATO:	INDICADA	