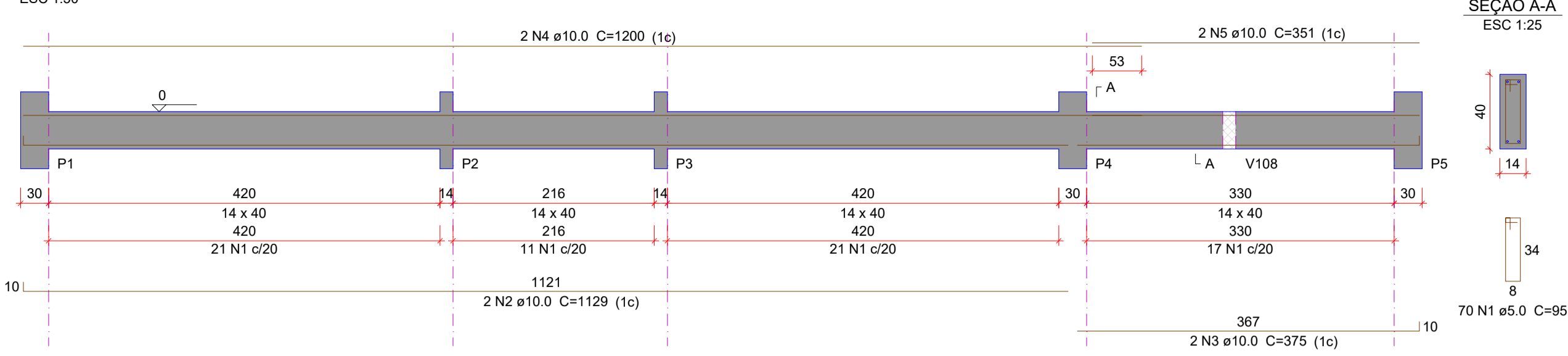
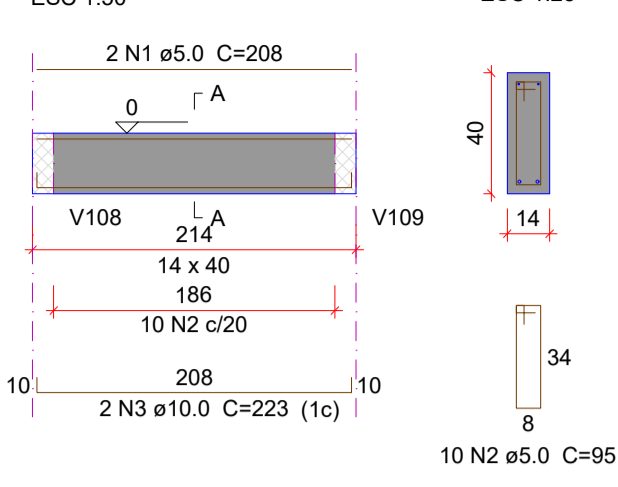


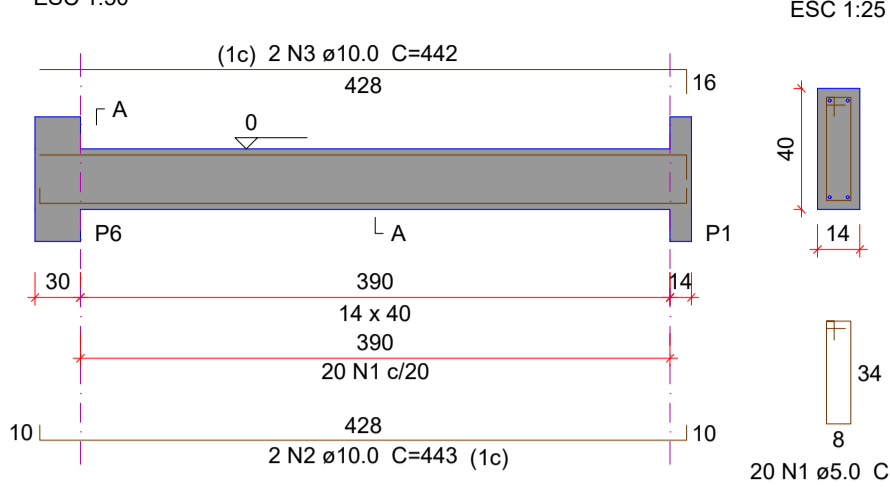
**V101 (14 x 40)**



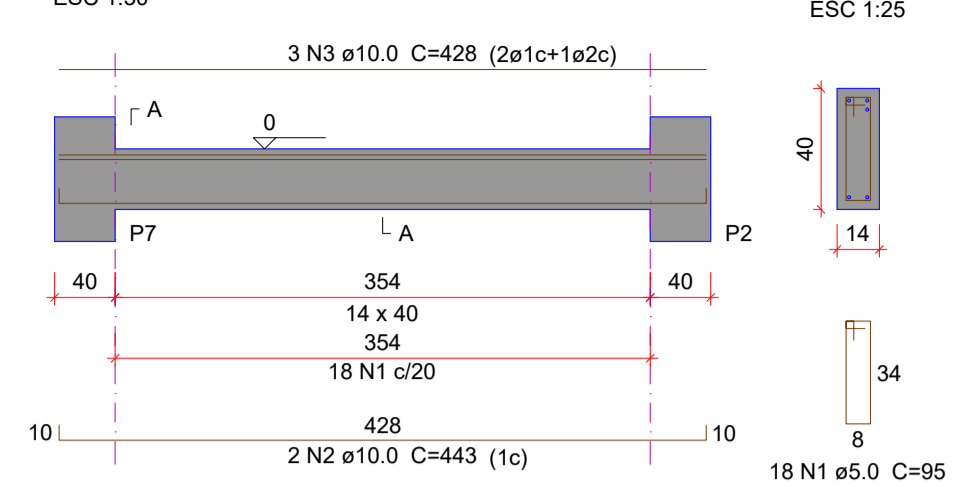
**V102 (14 x 40)**



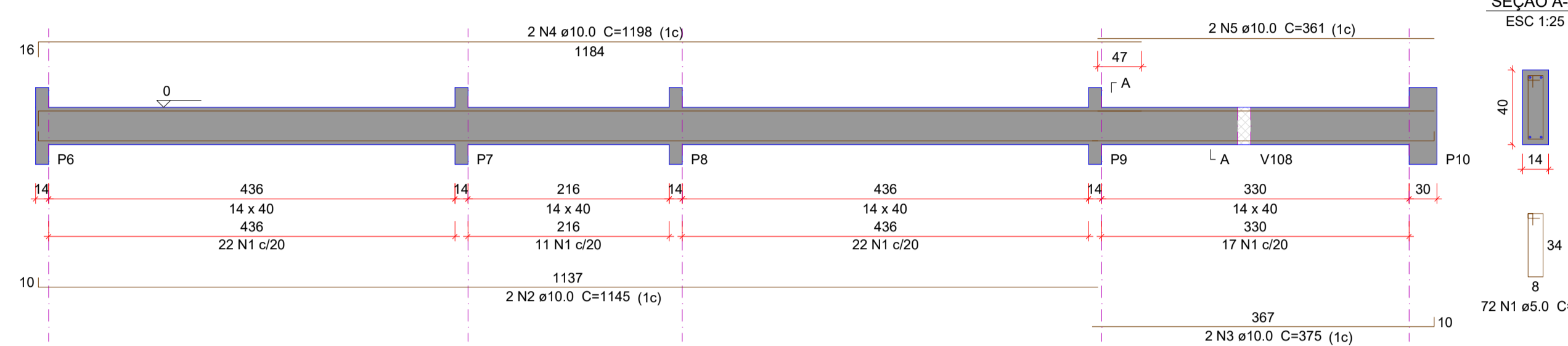
**V104 (14 x 40)**



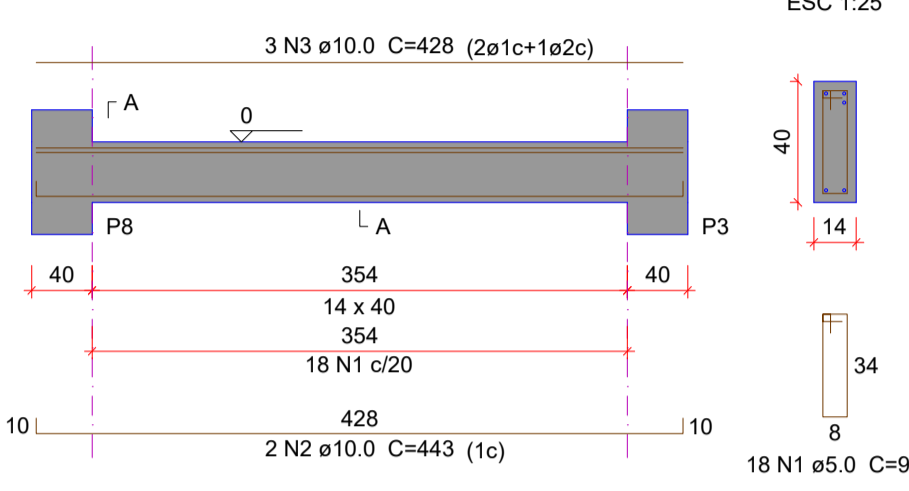
**V105 (14 x 40)**



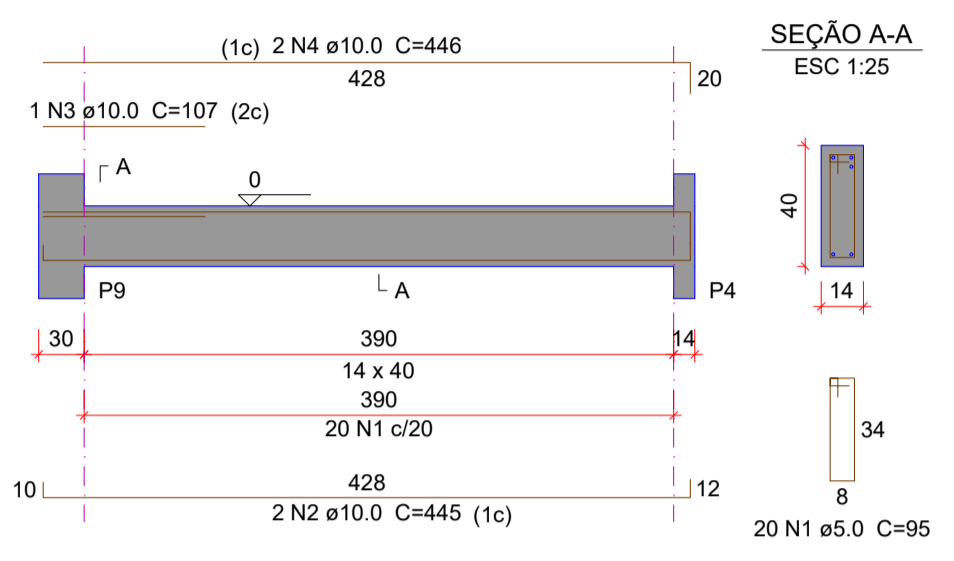
**V103 (14 x 40)**



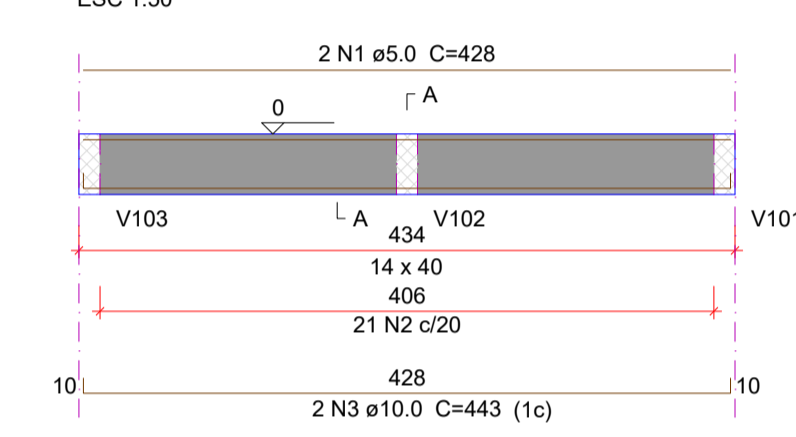
**V106 (14 x 40)**



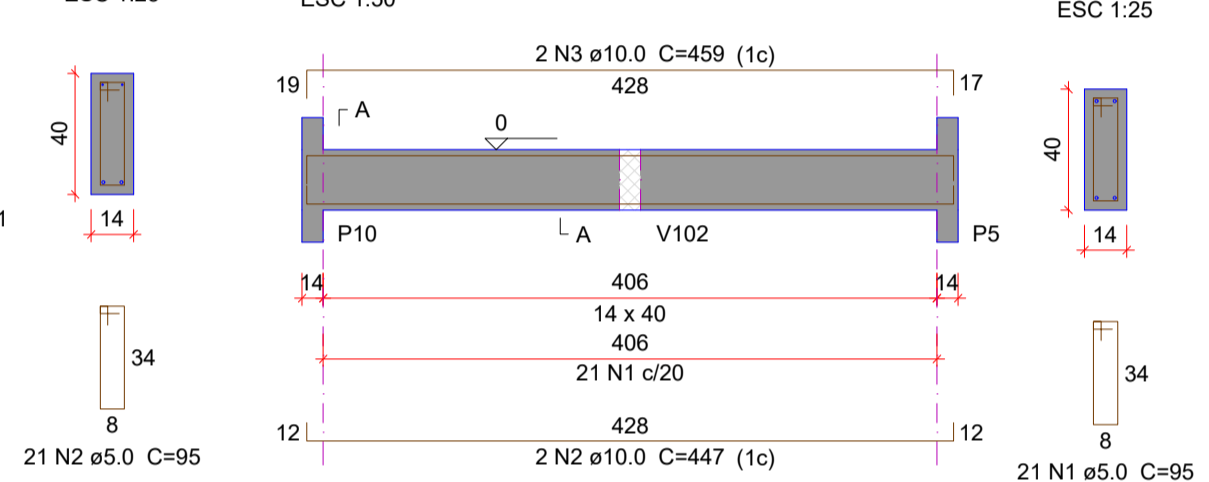
**V107 (14 x 40)**



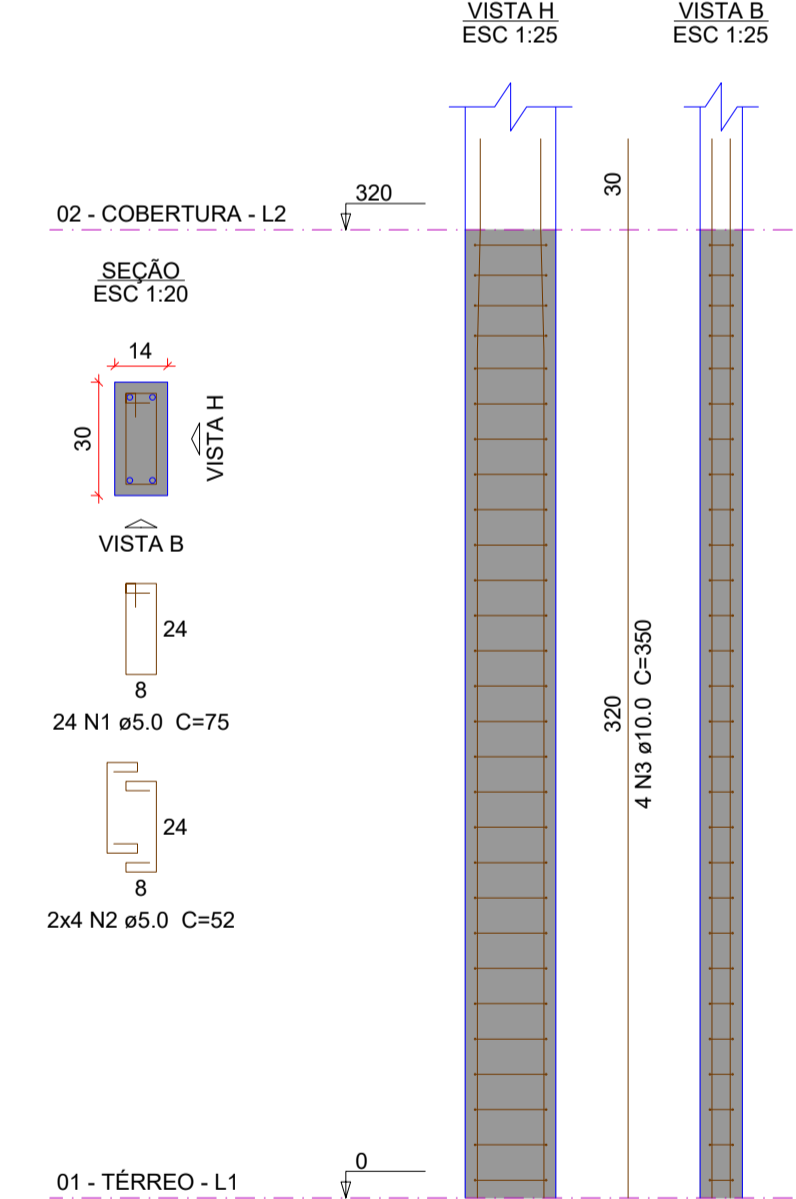
**V108 (14 x 40)**



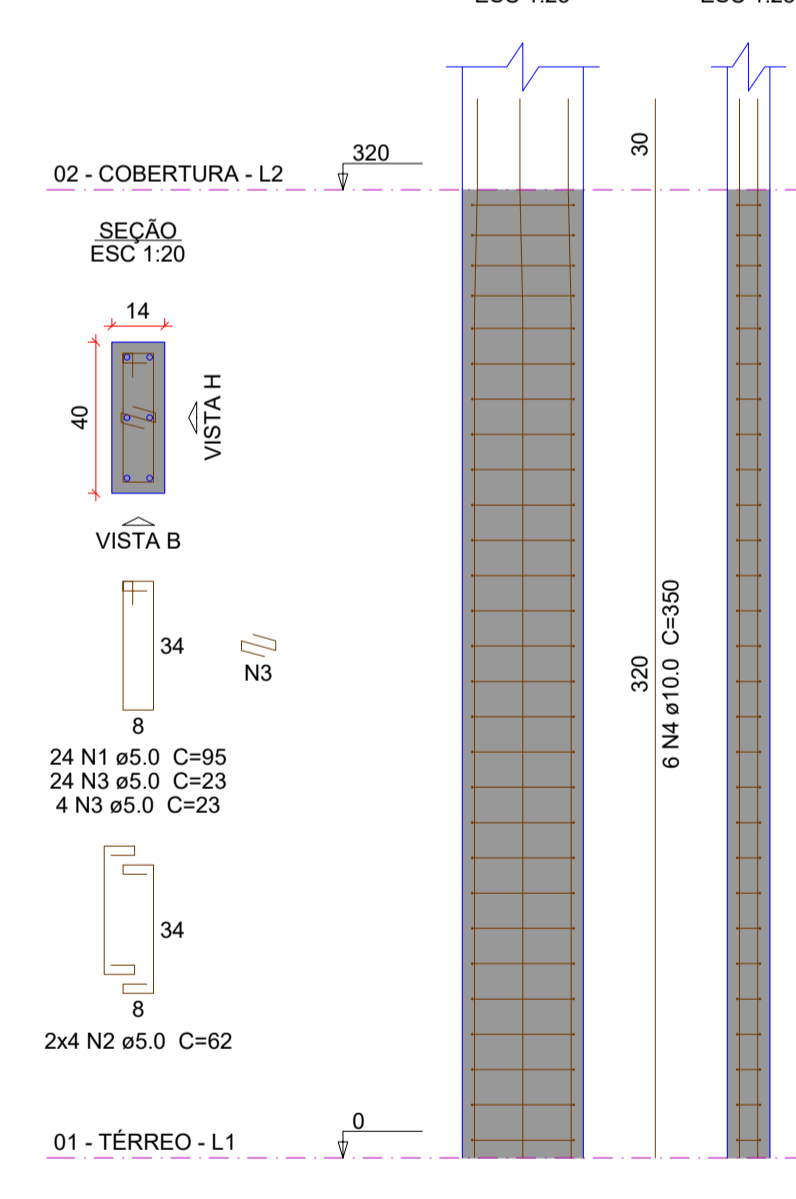
**V109 (14 x 40)**



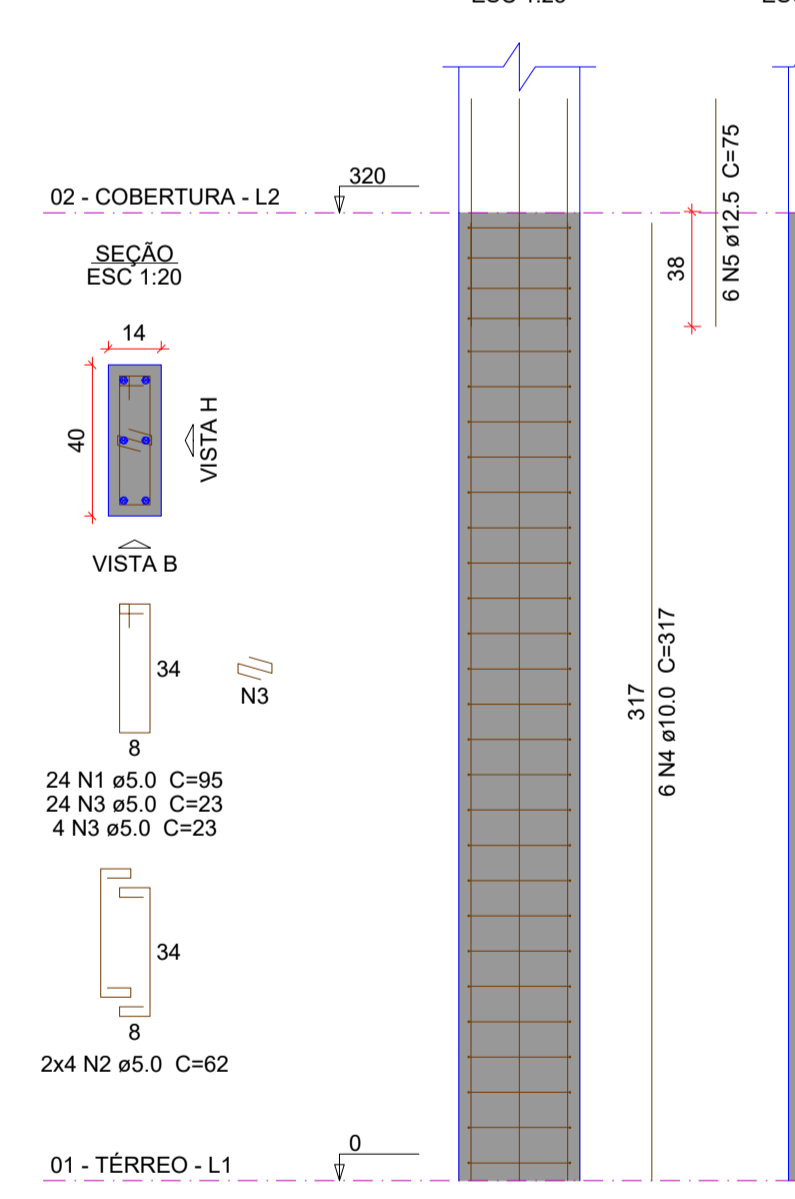
**P1=P4=P5=P6**



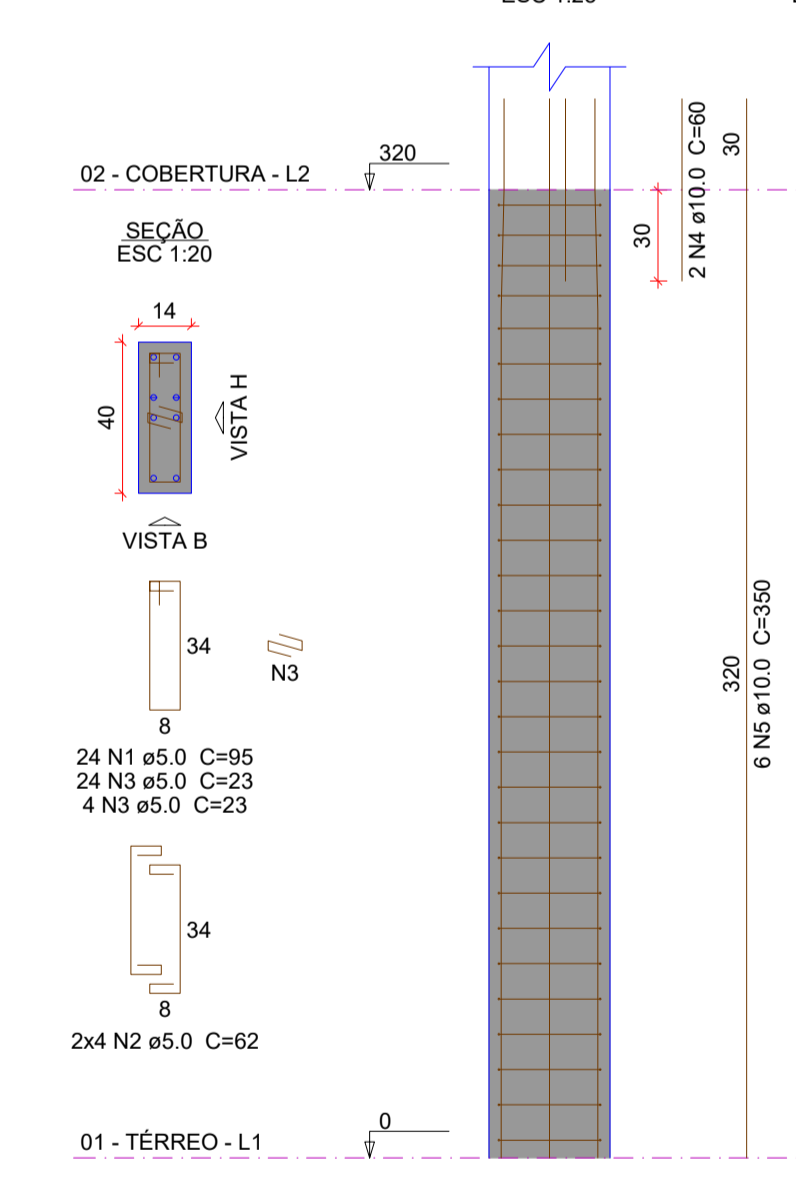
**P2=P3**



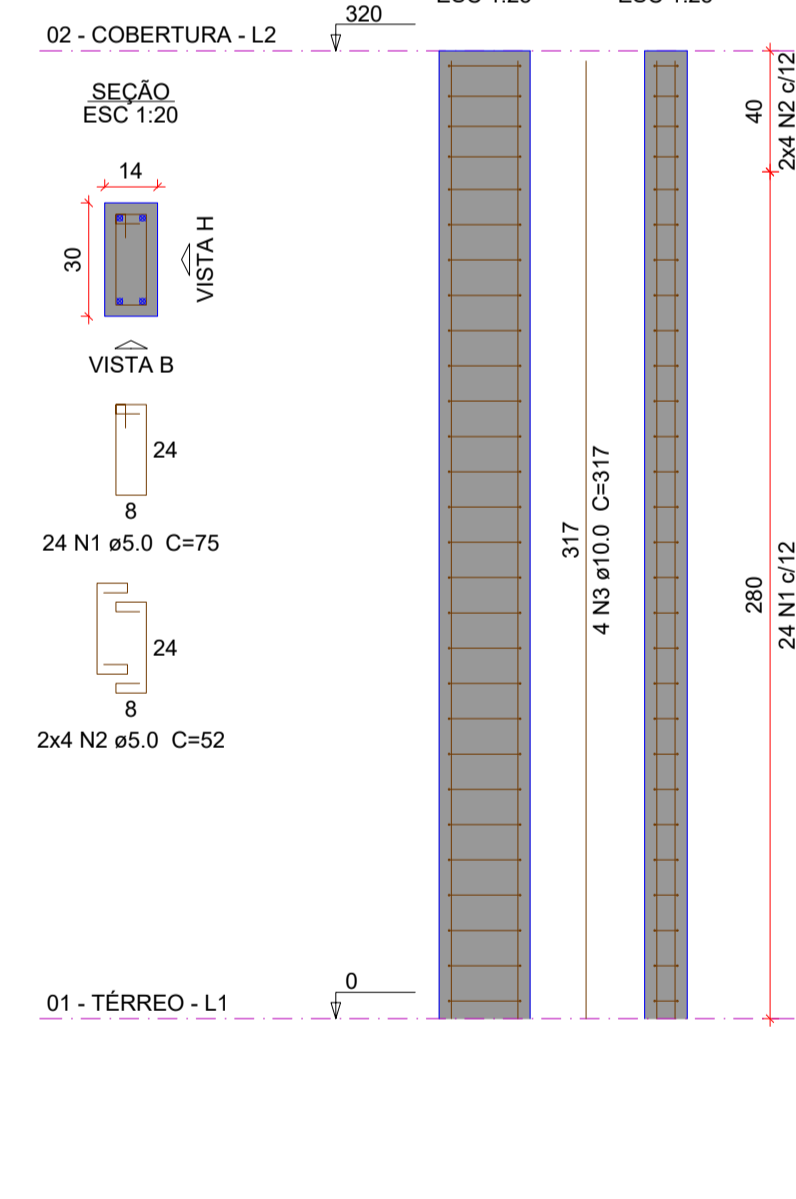
**P7**



**P8**



**P9=P10**



**Relação do aço**

ELEMENTO	AÇO	N	DIAM (mm)	QUANT	C.UNIT (cm)	C.TOTAL (cm)
V101	CA60	1	5.0	70	95	6650
	CA50	2	10.0	2	1129	2258
	CA50	3	10.0	2	375	750
	CA50	4	10.0	2	1200	2400
	CA50	5	10.0	2	351	702
V102	CA60	1	5.0	2	208	416
	CA60	2	5.0	10	95	950
	CA50	3	10.0	2	223	446
	CA60	1	5.0	72	95	6840
	CA50	2	10.0	2	1145	2290
V103	CA50	3	10.0	2	375	750
	CA50	4	10.0	2	1198	2396
	CA50	5	10.0	2	361	722
	CA60	1	5.0	20	95	1900
	CA50	2	10.0	2	443	886
V104	CA50	3	10.0	2	442	884
	CA60	1	5.0	18	95	1710
	CA50	2	10.0	2	443	886
	CA50	3	10.0	3	428	1284
	CA60	1	5.0	18	95	1710
V105	CA50	2	10.0	2	443	886
	CA50	3	10.0	3	428	1284
	CA60	1	5.0	18	95	1710
	CA50	2	10.0	2	443	886
	CA50	3	10.0	2	445	890
V106	CA50	3	10.0	1	107	107
	CA50	4	10.0	2	446	892
	CA60	1	5.0	2	428	856
	CA60	2	5.0	21	95	1995
	CA50	3	10.0	2	443	886
V107	CA60	1	5.0	21	95	1995
	CA50	2	10.0	2	447	894
	CA50	3	10.0	2	459	918
	CA50	4	10.0	2	446	892
	CA50	5	10.0	2	443	886
V108	CA60	1	5.0	21	95	1995
	CA50	2	10.0	2	447	894
	CA50	3	10.0	2	459	918
	CA50	4	10.0	2	446	892
	CA50	5	10.0	2	443	886
V109	CA60	1	5.0	21	95	1995
	CA50	2	10.0	2	447	894
	CA50	3	10.0	2	459	918
	CA50	4	10.0	2	446	892
	CA50	5	10.0	2	443	886

**Resumo do aço**

AÇO	DIAM (mm)	C.TOTAL (m)	QUANT + 10% (Barras)	PESO + 10% (kg)
CA50	10.0	234.2	22	158.8
CA60	5.0	269.3	-	45.6
<b>PESO TOTAL (kg)</b>				
CA50				158.8
CA60				45.6

Volume de concreto (C-35) = 2.99 m³  
Área de forma = 49.99 m²

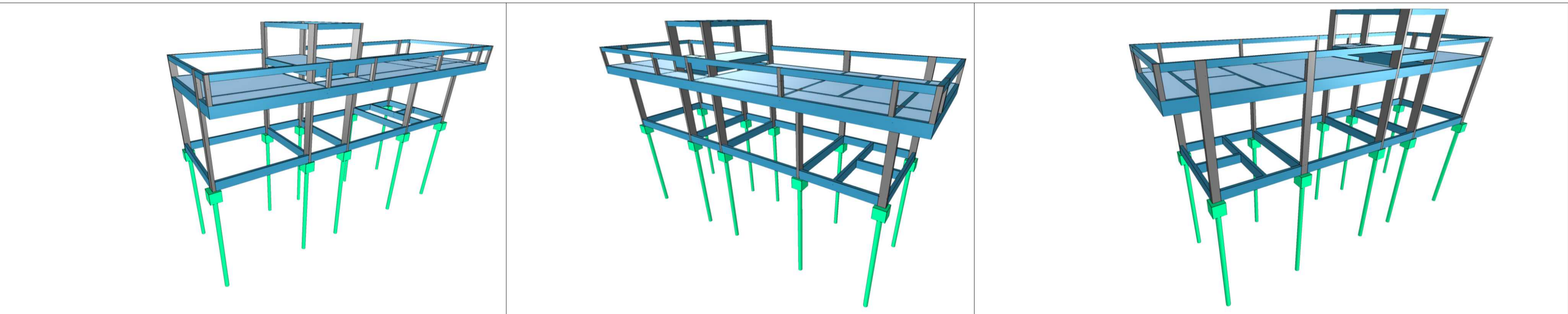
**Relação do aço**

ELEMENTO	AÇO	N	DIAM (mm)	QUANT	C.UNIT (cm)	C.TOTAL (cm)
4xP1	CA60	1	5.0	96	75	7200
	CA60	2	5.0	32	52	1664
	CA50	3	10.0	16	350	5600
2xP2	CA60	1	5.0	48	95	4560
	CA60	2	5.0	16	62	992
	CA60	3	5.0	56	23	1288
P7	CA50	4	10.0	12	350	4200
	CA60	1	5.0	24	95	2280
	CA60	2	5.0	8	62	496
	CA60	3	5.0	28	23	644
	CA50	4	10.0	6	317	1902
P8	CA50	5	12.5	6	75	450
	CA60	1	5.0	24	95	2280
	CA60	2	5.0	8	62	496
	CA60	3	5.0	28	23	644
	CA50	4	10.0	6	350	2100
2xP9	CA60	2	5.0	48	75	3600
	CA60	2	5.0	16	52	832
	CA50	3	10.0	8	317	2536

**Resumo do aço**

AÇO	DIAM (mm)	C.TOTAL (m)	QUANT + 10% (Barras)	PESO + 10% (kg)
CA50	10.0	164.6	16	111.6
CA60	5.0	4.5	1	4.8
<b>PESO TOTAL (kg)</b>				
CA50				116.4
CA60				45.7

Volume de concreto (C-35) = 1.52 m³  
Área de forma = 30.72 m²



PREFEITA GARMEN ZANOTTO  
PREFEITURA DO MUNICÍPIO DE LAGES (SANTA CATARINA)  
CNPJ 82.777.301/0001-90  
RUA BENJAMIN CONSTANT - Nº 13  
BAIRRO CENTRO, CEP 88501-900  
FONE (49) 3019-7400

**SEPLAM**  
SECRETARIA DE PLANEJAMENTO E MOBILIDADE URBANA

RUA: ARISTILIANO RAMOS, Nº 100,  
BAIRRO: CENTRO  
CEP 88502-050, FONE (49) 3019-7548

SECRETÁRIO: MALEK RAU DABBOUS CAU-SC: A52284-8  
DIRETOR: JESSICA CORSO CAU-SC: A119066-0  
PROJETO: NILSON WESTPHAL JUNIOR CREA-SC: 166.077-1  
DESENHO: NILSON WESTPHAL JUNIOR CREA-SC: 166.077-1

---

DE ACORDO RESPONSÁVEL MUNICÍPIO: \_\_\_\_\_ DE ACORDO RESPONSÁVEL TÉCNICO: \_\_\_\_\_

PREFEITURA DO MUNICÍPIO DE LAGES CNPJ 82.777.301/0001-90 ENGENHEIRO CIVIL - CREA/SC 166.077-1

---

OBRA: VESTIÁRIOS BAIRRO HABITAÇÃO  
ENDEREÇO: RUA ÁLVARO NERI DOS SANTOS, 735-929 - BAIRRO HABITAÇÃO, LAGES - SC, 88511-300

DESCRIÇÃO: PROJETO ESTRUTURAL  
VIGAS COBERTURA, PILARES

DATA: 12/03/2026  
ESCALA: INDICADAS  
ÁREA TOTAL: 66,44m²

PRANCHA: EST  
PRANCHA: 02/05  
PRANCHA A1