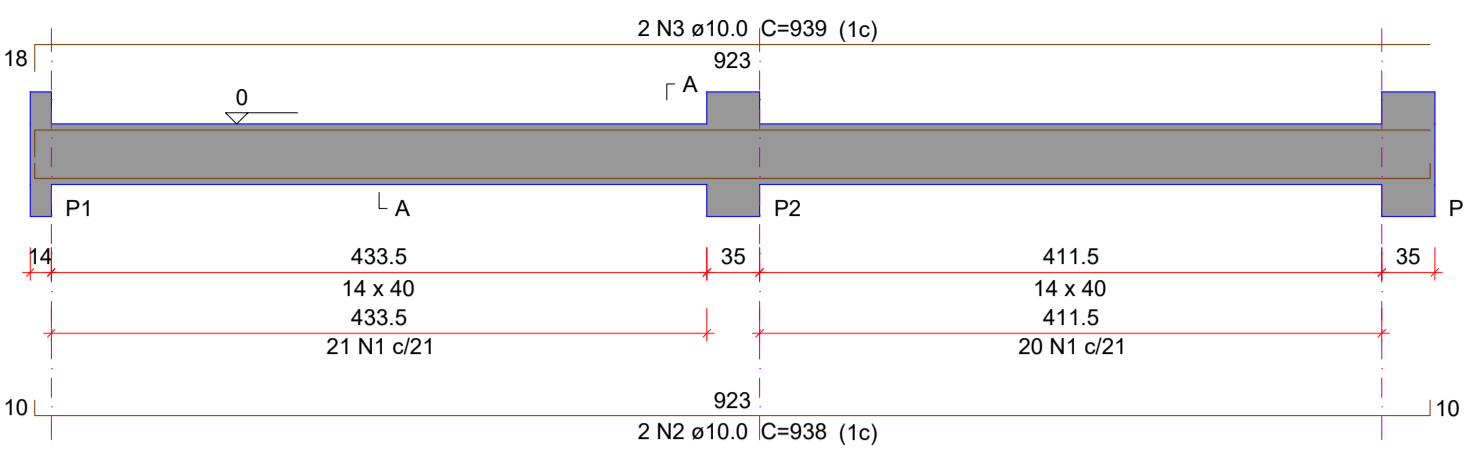
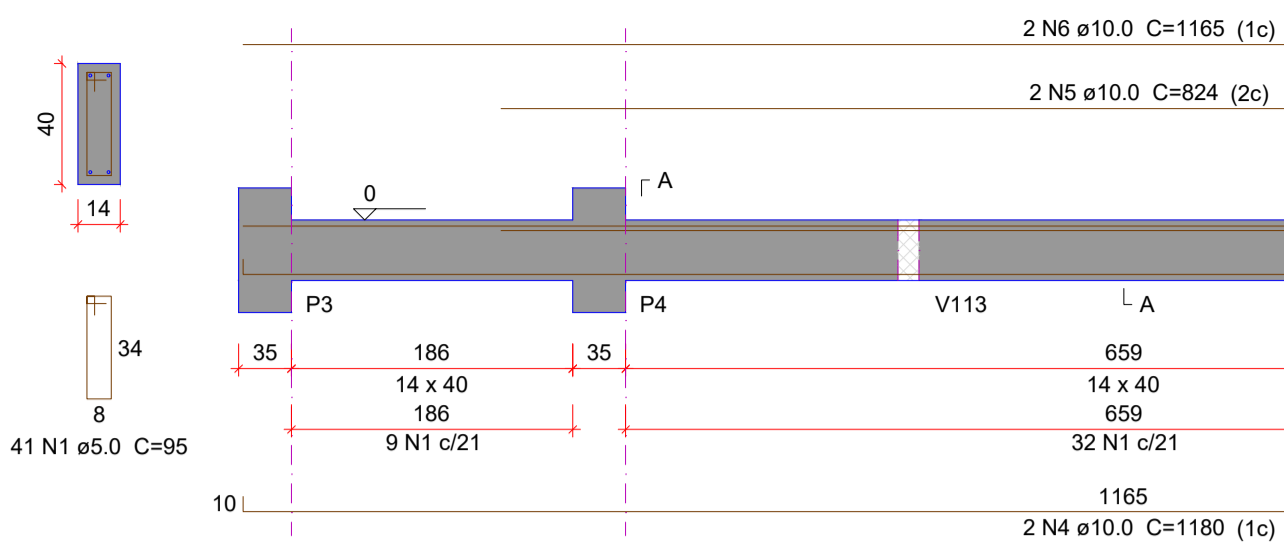


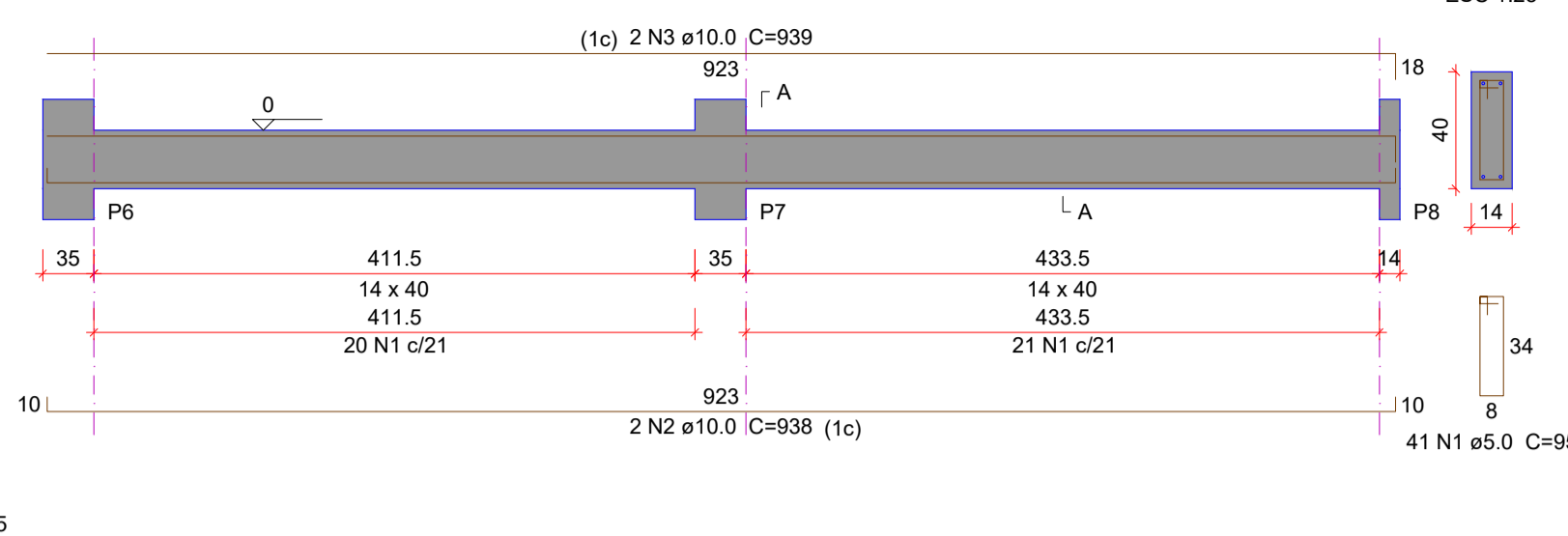
**V101 (14 x 40)**  
ESC 1:50



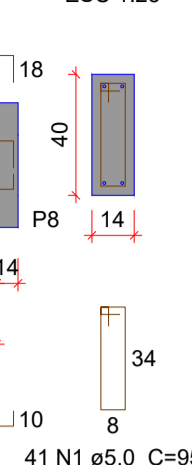
**V102 (14 x 40)**  
ESC 1:50



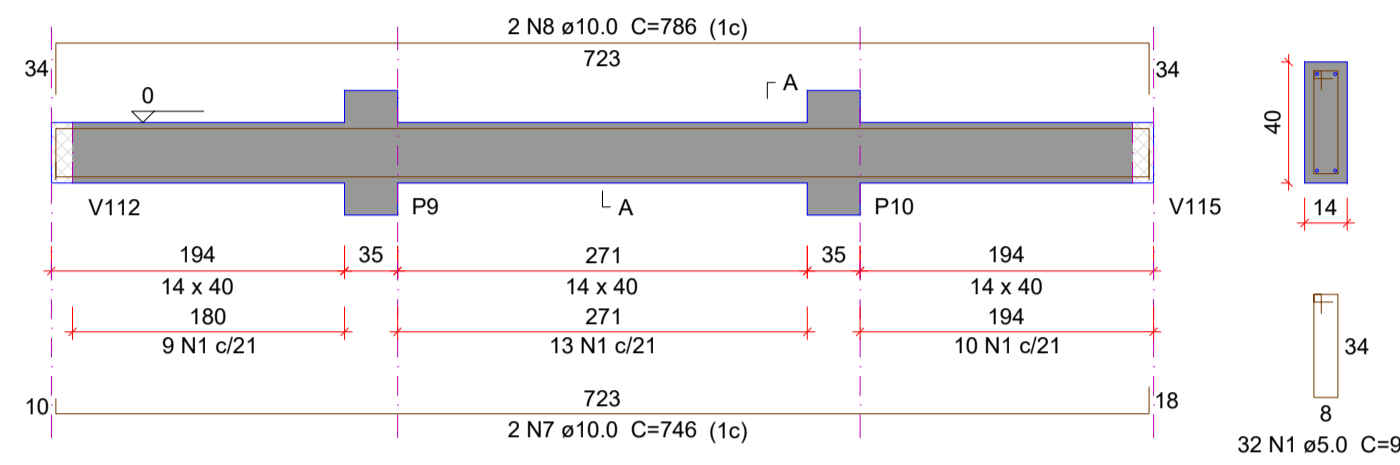
**V103 (14 x 40)**  
ESC 1:50



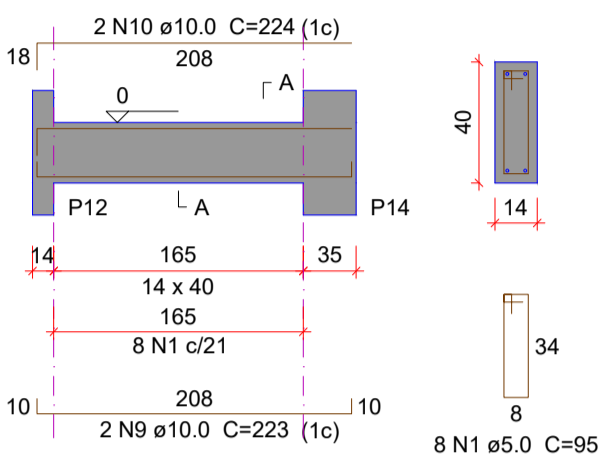
**SEÇÃO A-A**  
ESC 1:25



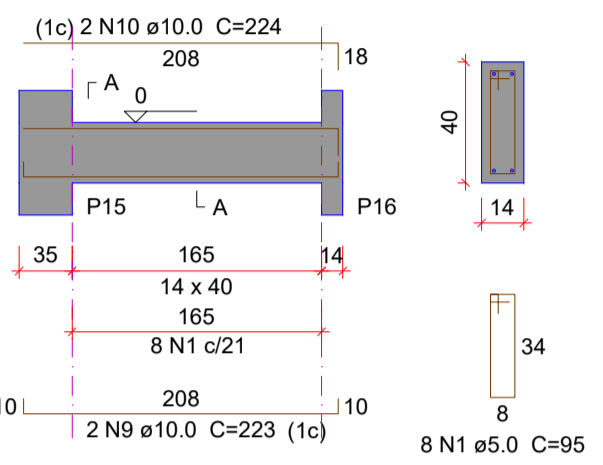
**V104 (14 x 40)**  
ESC 1:50



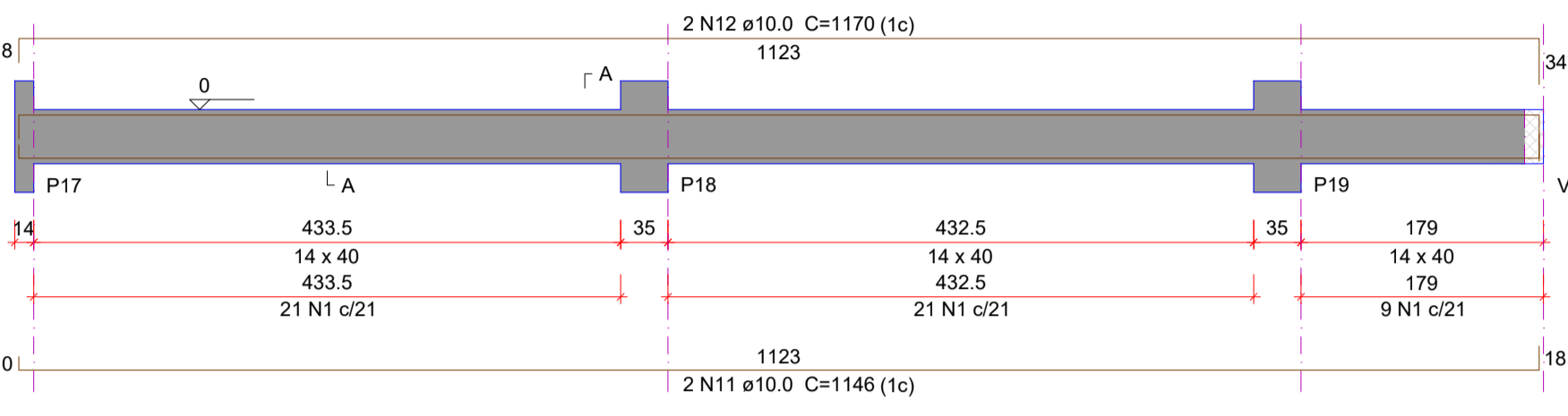
**V105 (14 x 40)**  
ESC 1:50



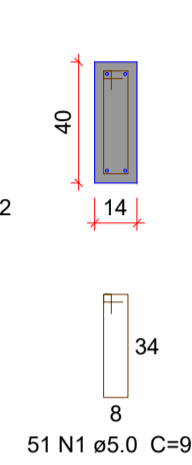
**V106 (14 x 40)**  
ESC 1:50



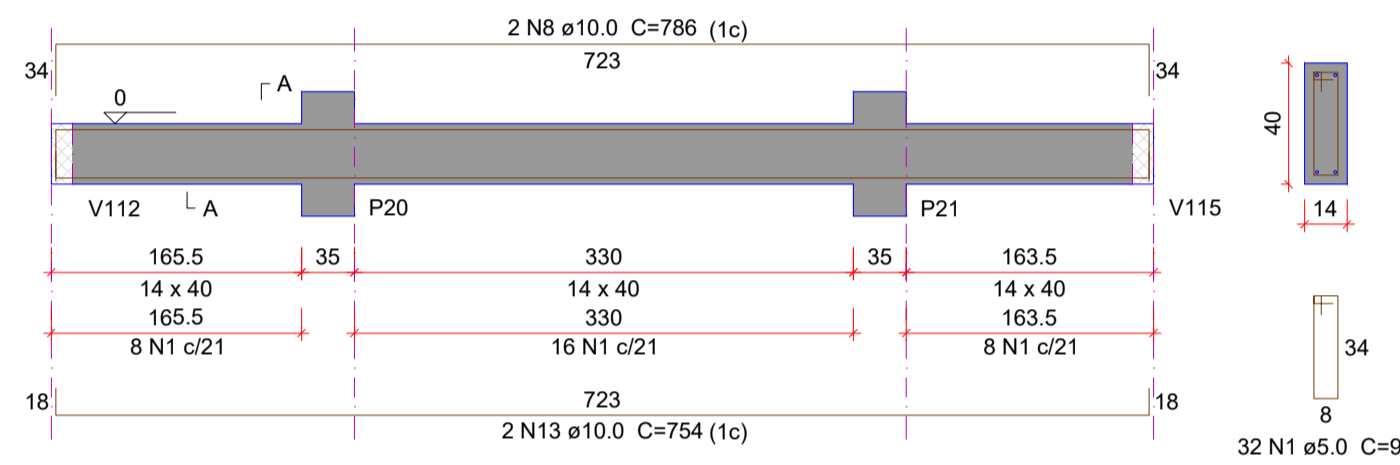
**V107 (14 x 40)**  
ESC 1:50



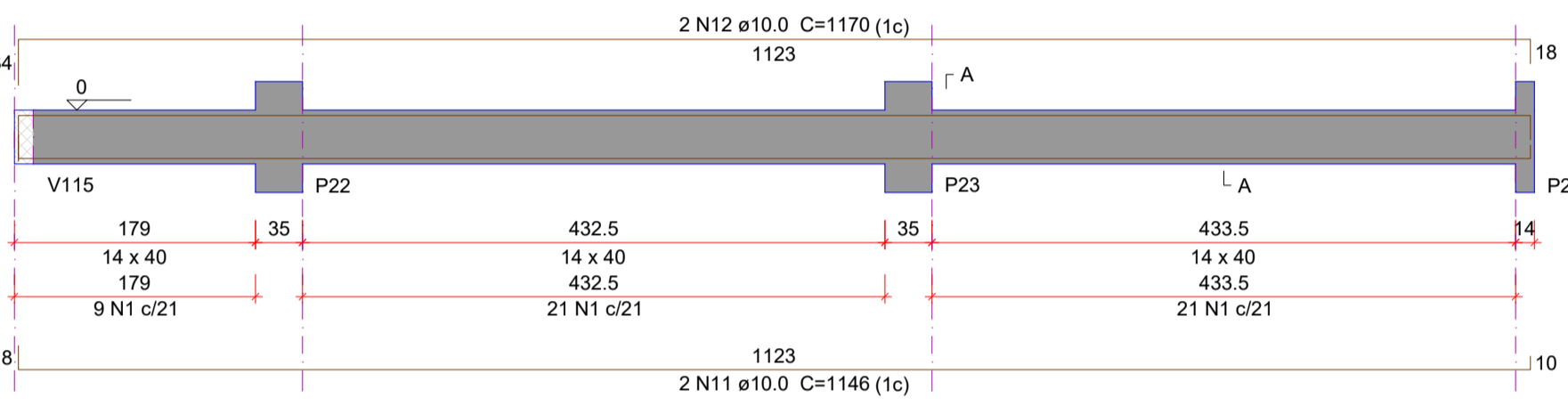
**SEÇÃO A-A**  
ESC 1:25



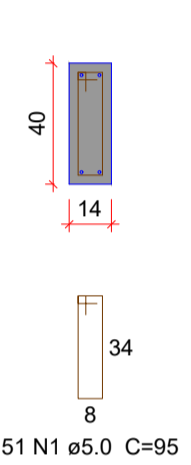
**V108 (14 x 40)**  
ESC 1:50



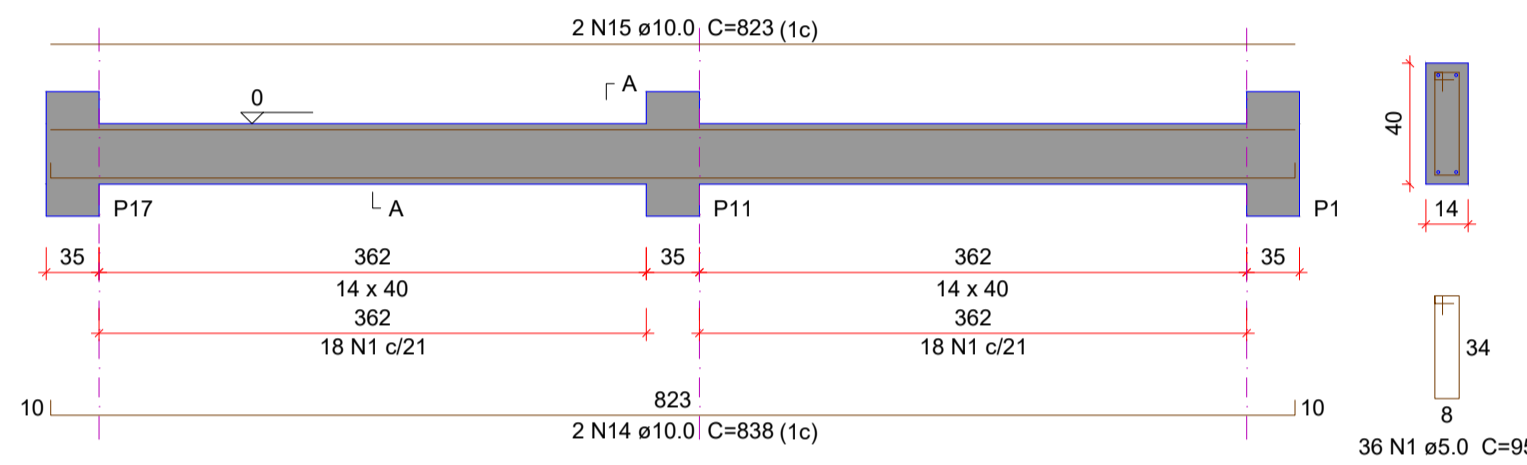
**V109 (14 x 40)**  
ESC 1:50



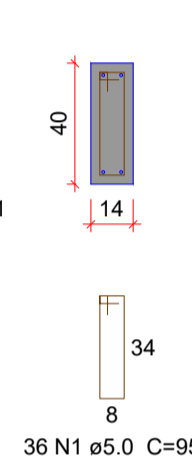
**SEÇÃO A-A**  
ESC 1:25



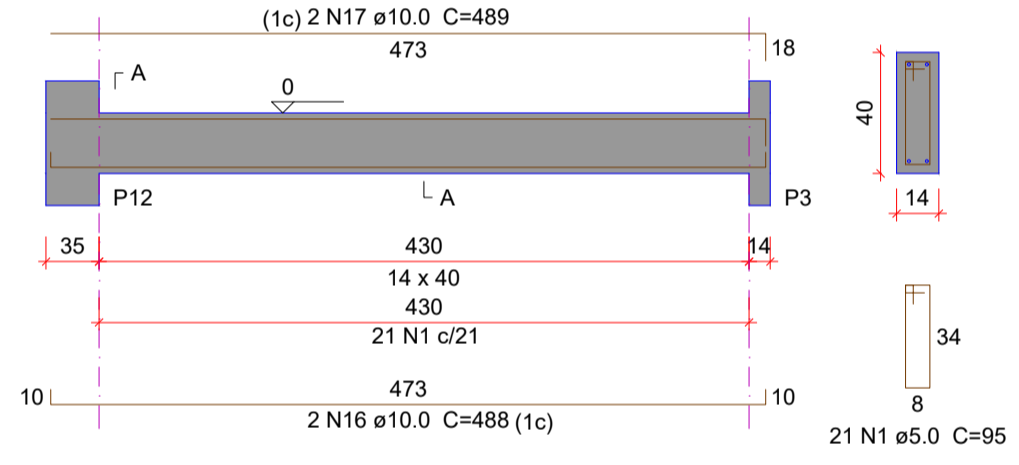
**V110 (14 x 40)**  
ESC 1:50



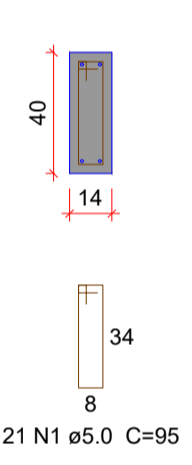
**SEÇÃO A-A**  
ESC 1:25



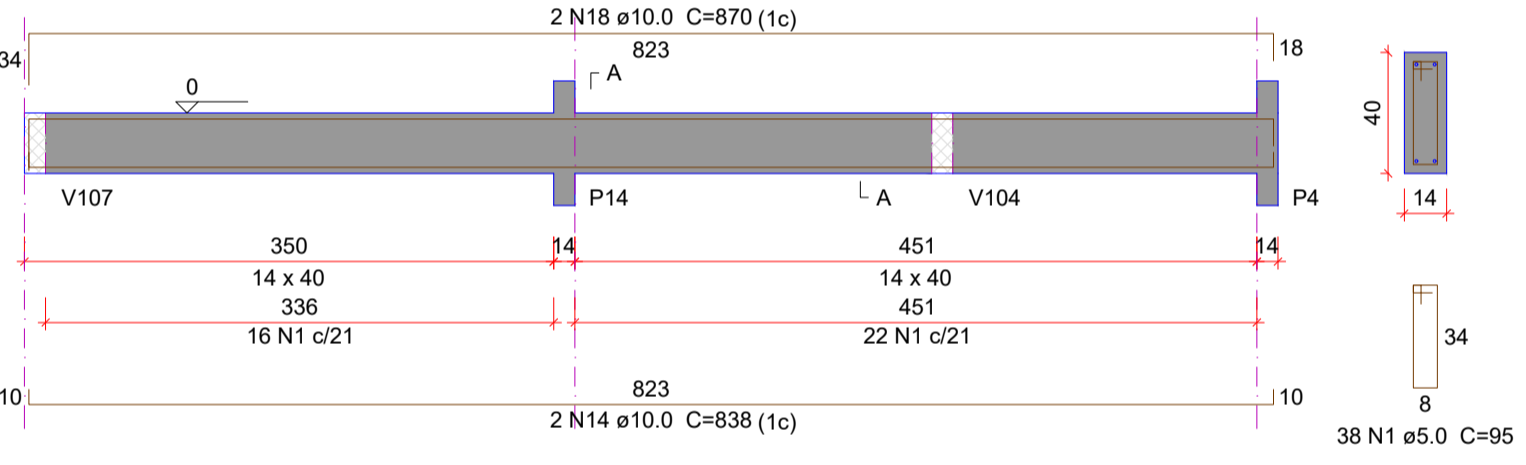
**V111 (14 x 40)**  
ESC 1:50



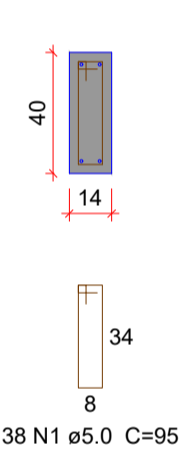
**SEÇÃO A-A**  
ESC 1:25



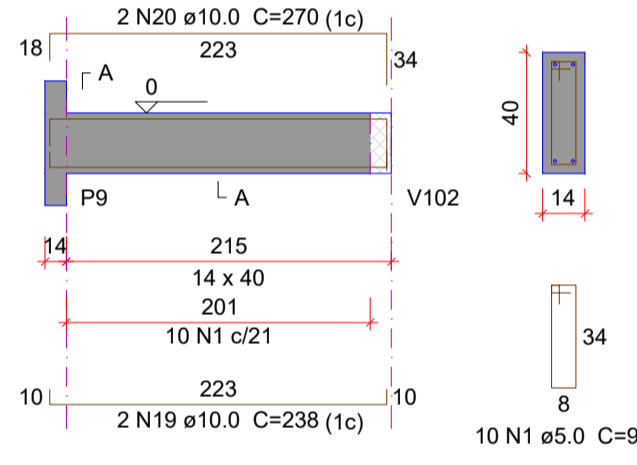
**V112 (14 x 40)**  
ESC 1:50



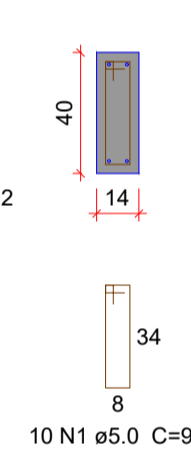
**SEÇÃO A-A**  
ESC 1:25



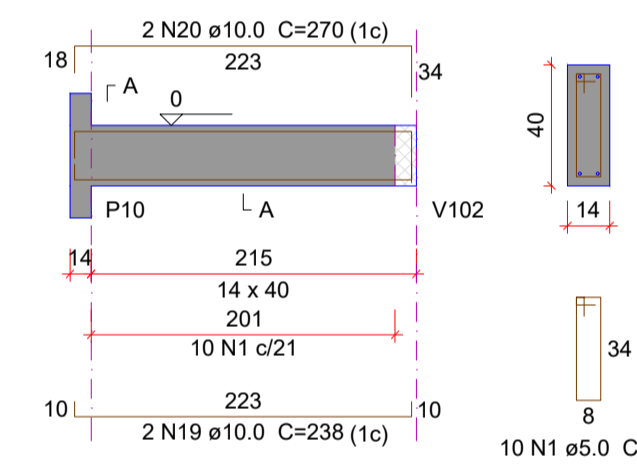
**V113 (14 x 40)**  
ESC 1:50



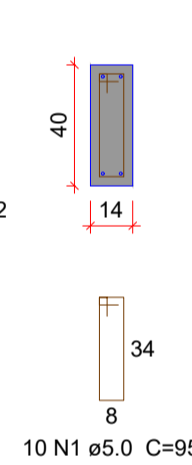
**SEÇÃO A-A**  
ESC 1:25



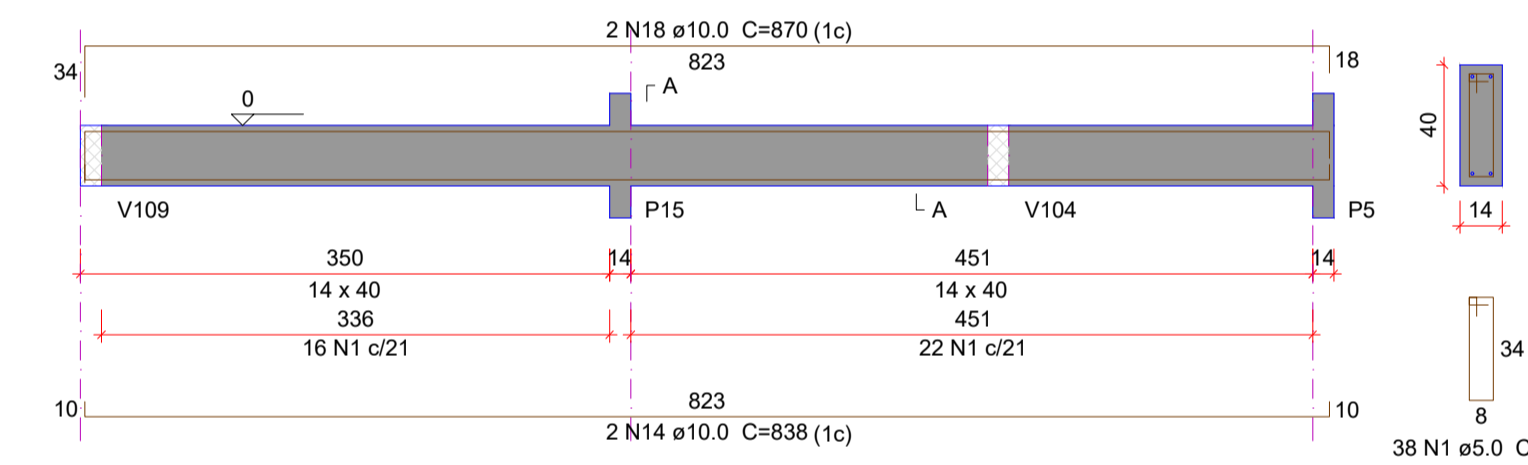
**V114 (14 x 40)**  
ESC 1:50



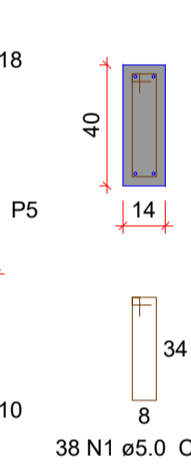
**SEÇÃO A-A**  
ESC 1:25



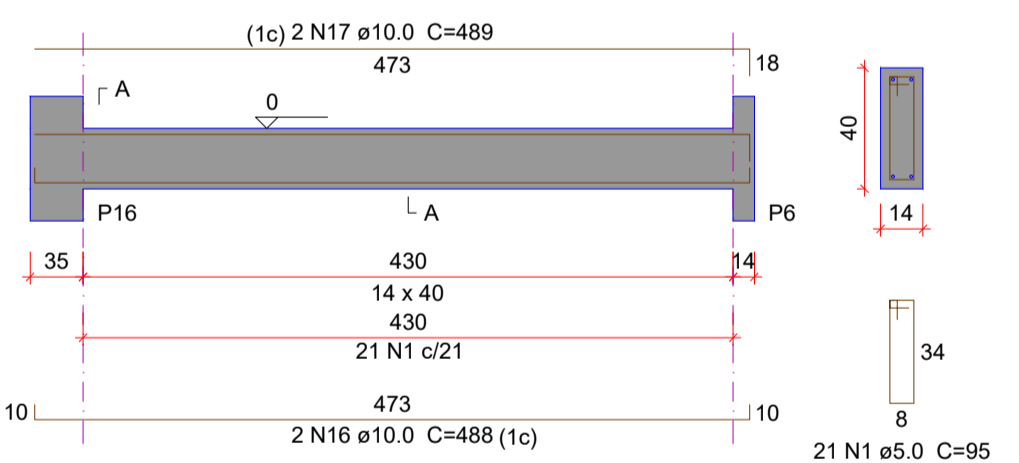
**V115 (14 x 40)**  
ESC 1:50



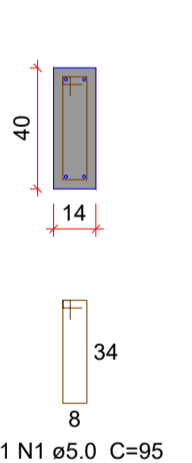
**SEÇÃO A-A**  
ESC 1:25



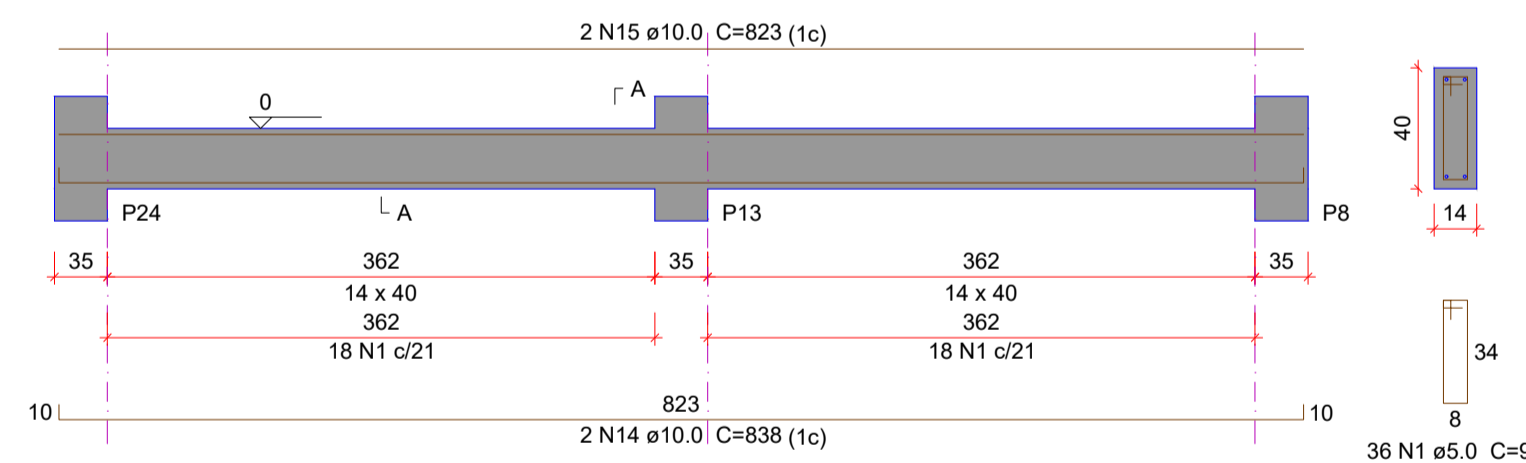
**V116 (14 x 40)**  
ESC 1:50



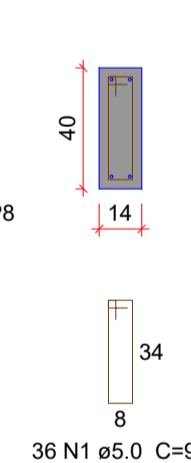
**SEÇÃO A-A**  
ESC 1:25



**V117 (14 x 40)**  
ESC 1:50



**SEÇÃO A-A**  
ESC 1:25



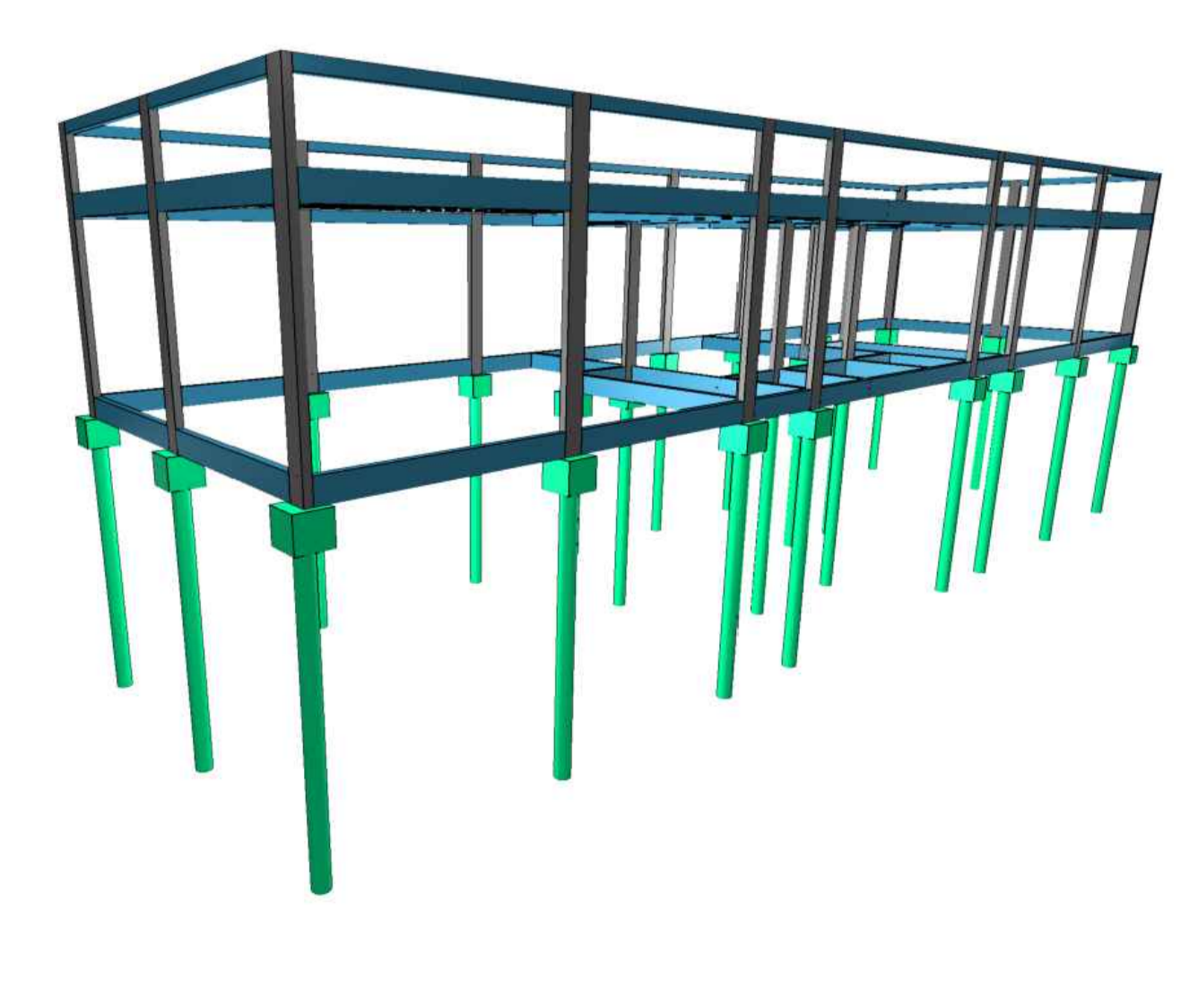
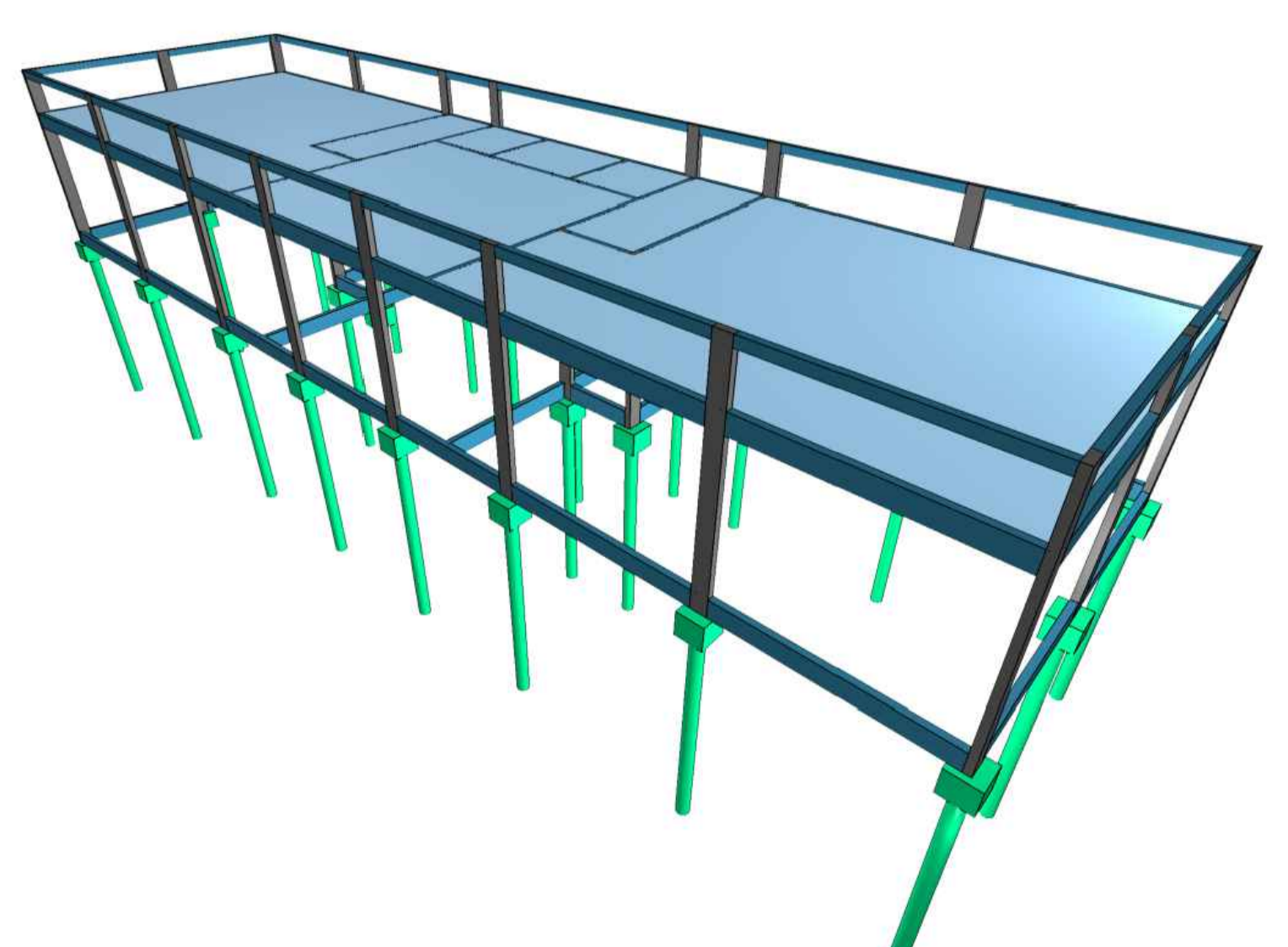
**Relação do aço**

AÇO	N	DIAM (mm)	QUANT	C.UNIT (cm)	C.TOTAL (cm)
V101	1	5.0	524	95	49780
V104	2	10.0	4	938	3752
V107	3	10.0	4	939	3756
V110	4	10.0	2	1180	2360
V113	5	10.0	2	824	1648
V116	6	10.0	2	1165	2330
V102	7	10.0	2	746	1492
V105	8	10.0	4	786	3144
V108	9	10.0	4	223	892
V111	10	10.0	4	224	896
V112	11	10.0	4	1146	4584
V114	12	10.0	4	1170	4680
V115	13	10.0	2	754	1508
V106	14	10.0	8	838	6704
V109	15	10.0	4	823	3292
V117	16	10.0	4	488	1952
V113	17	10.0	4	489	1956
V116	18	10.0	4	870	3480
V110	19	10.0	4	238	952
V111	20	10.0	4	270	1080

**Resumo do aço**

AÇO	DIAM (mm)	C.TOTAL (m)	QUANT + 10 % (Barras)	PESO + 10 % (kg)
CA50	10.0	504.6	47	342.2
CA60	5.0	497.8	-	84.4
<b>PESO TOTAL (kg)</b>				<b>342.2</b>

Volume de concreto (C-30) = 6.01 m³  
Área de forma = 100.85 m²



		PREFEITA CARMEN ZANOTTO PREFEITURA DO MUNICÍPIO DE LAGES (SANTA CATARINA) CNPJ 82.777.301/0001-90 RUA BENJAMIN CONSTANT - Nº 13 BAIRRO CENTRO, CEP 88501-900 FONE (49) 3019-7400	
SECRETÁRIO: MALEK RAU DABBOUS CAU-SC: A52284-8 DIRETOR: JESSICA CORSO CAU-SC: A119066-0 PROJETO: NILSON WESTPHAL JUNIOR CREA-SC: 166.077-1 DESENHO: NILSON WESTPHAL JUNIOR CREA-SC: 166.077-1		<b>SEPLAM</b> SECRETARIA DE PLANEJAMENTO E MOBILIDADE URBANA RUA: ARISTILIANO RAMOS, Nº 100, BAIRRO: CENTRO CEP 88502-050, FONE (49) 3019-7548	
DE ACORDO RESPONSÁVEL MUNICÍPIO PREFEITURA DO MUNICÍPIO DE LAGES CNPJ 82.777.301/0001-90		DE ACORDO RESPONSÁVEL TÉCNICO NILSON WESTPHAL JUNIOR ENGENHEIRO CIVIL - CREA/SC 166.077-1	
OBRA: SALAS DE DANÇA E APOIO - CENTRO CULTURAL ENDEREÇO: RUA ARCHILAU BATISTA DO AMARAL, 475 - UNIVERSITÁRIO, LAGES - SC, 88511-100		NOME: <b>EST</b>	
PROJETO ESTRUTURAL VIGAS BALDRAME, VISTAS 3D		DATA: 22/12/2025 ESCALA: INDICADAS ÁREA TOTAL: 247,14m²	
		PRANCHA: <b>03/06</b> PRANCHA A1	