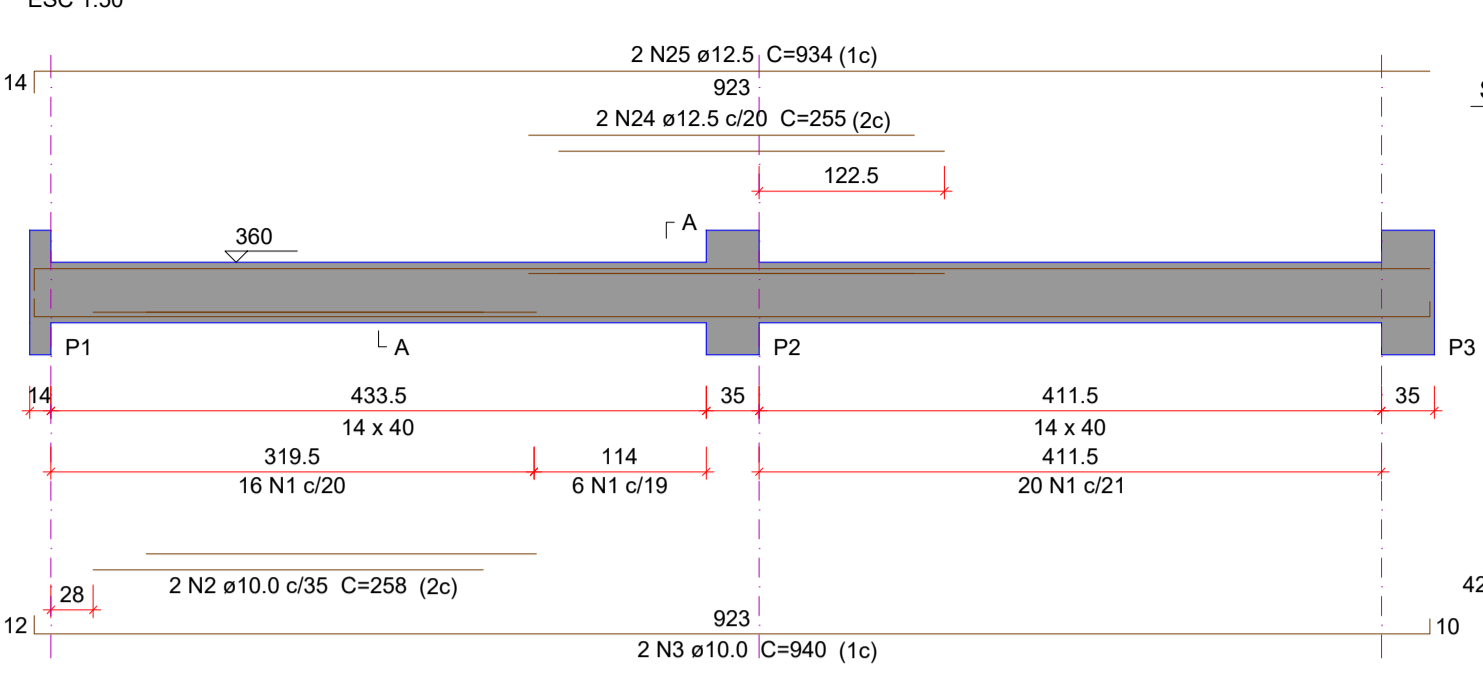
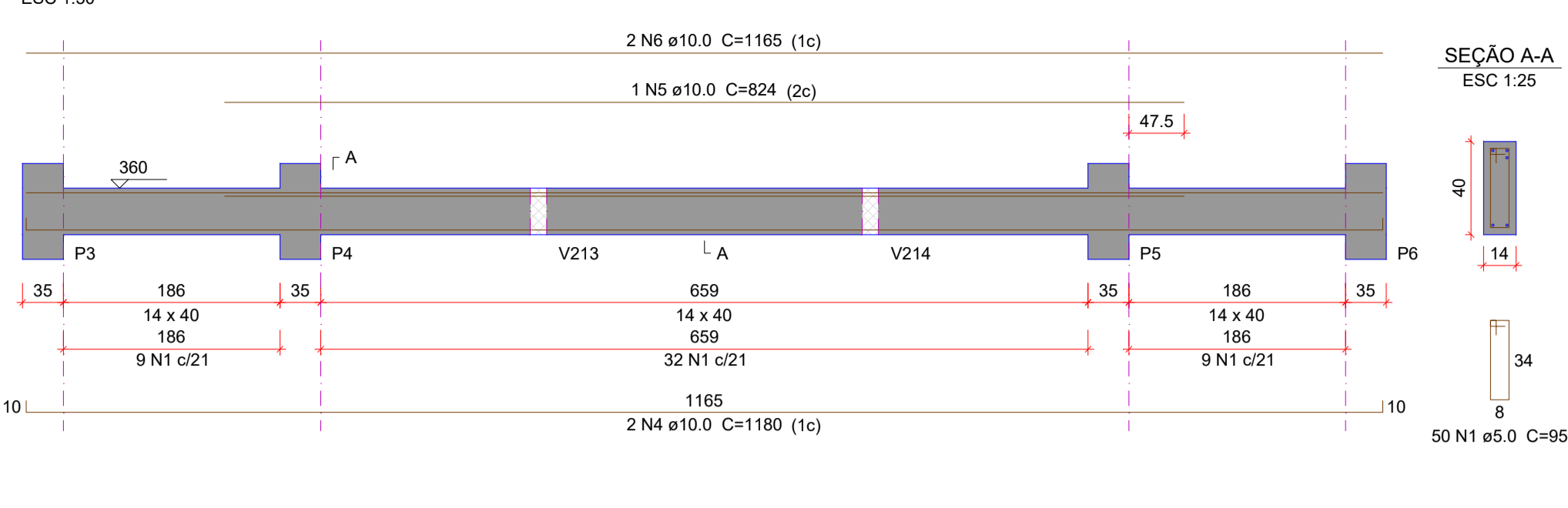


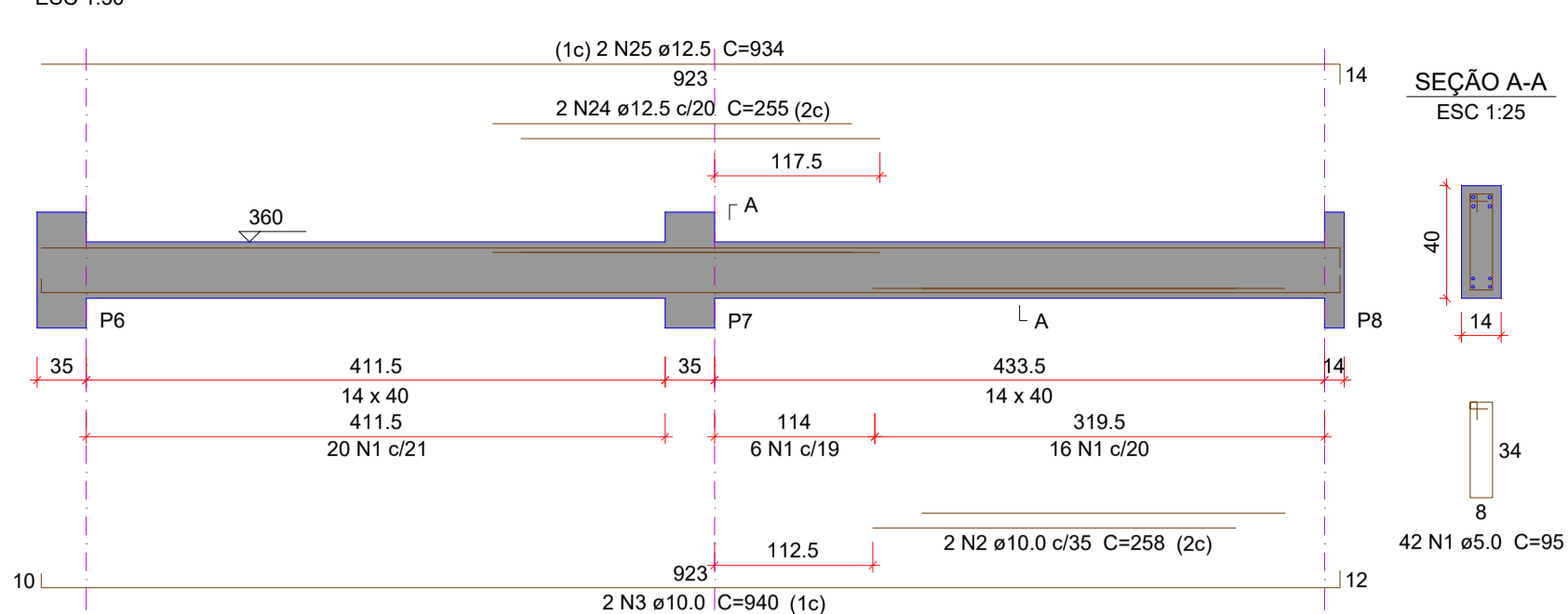
V201 (14 x 40)



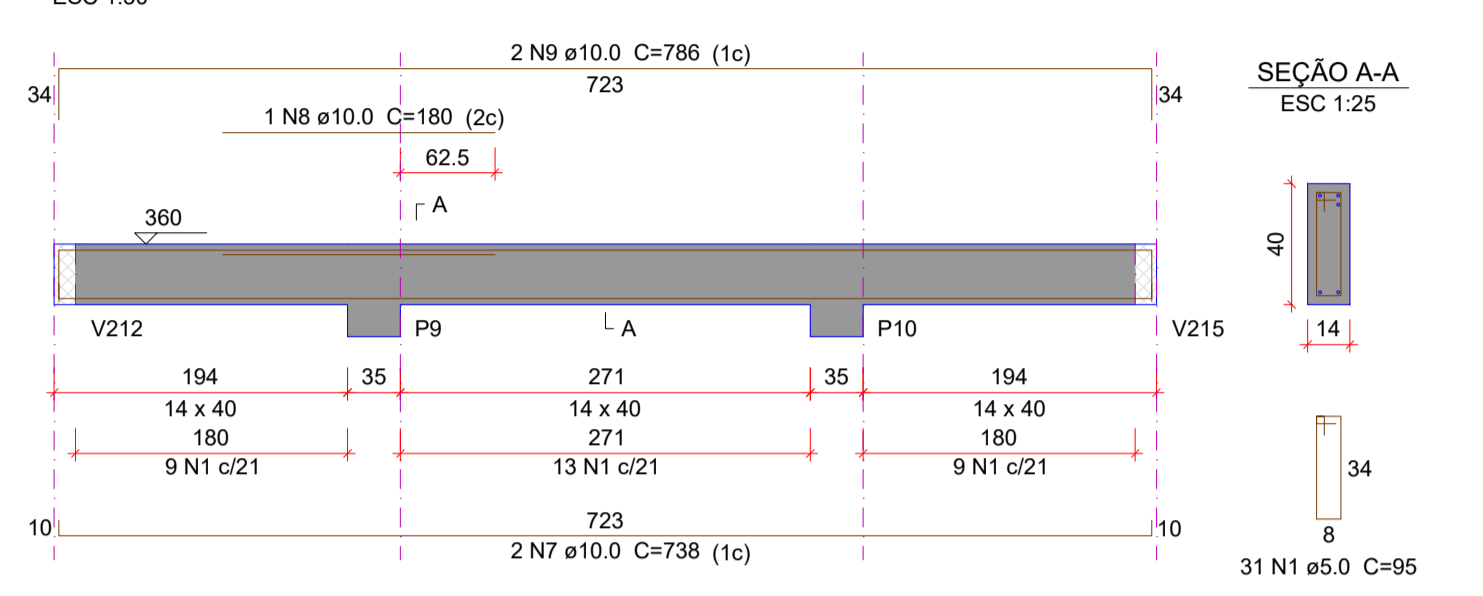
V202 (14 x 40)



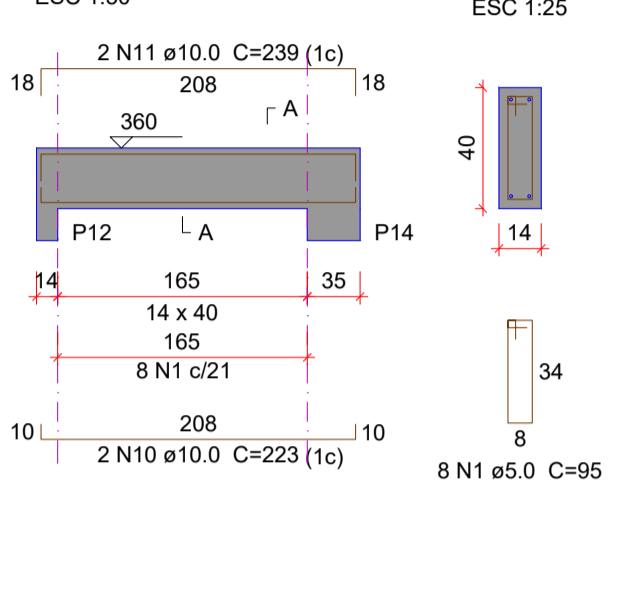
V203 (14 x 40)



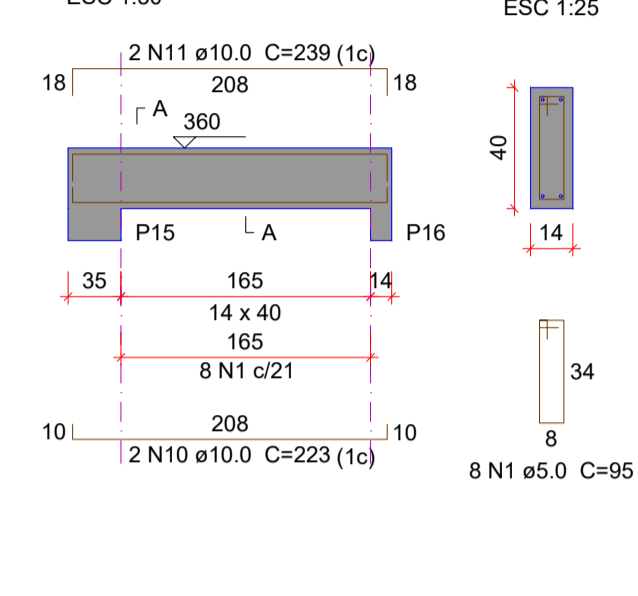
V204 (14 x 40)



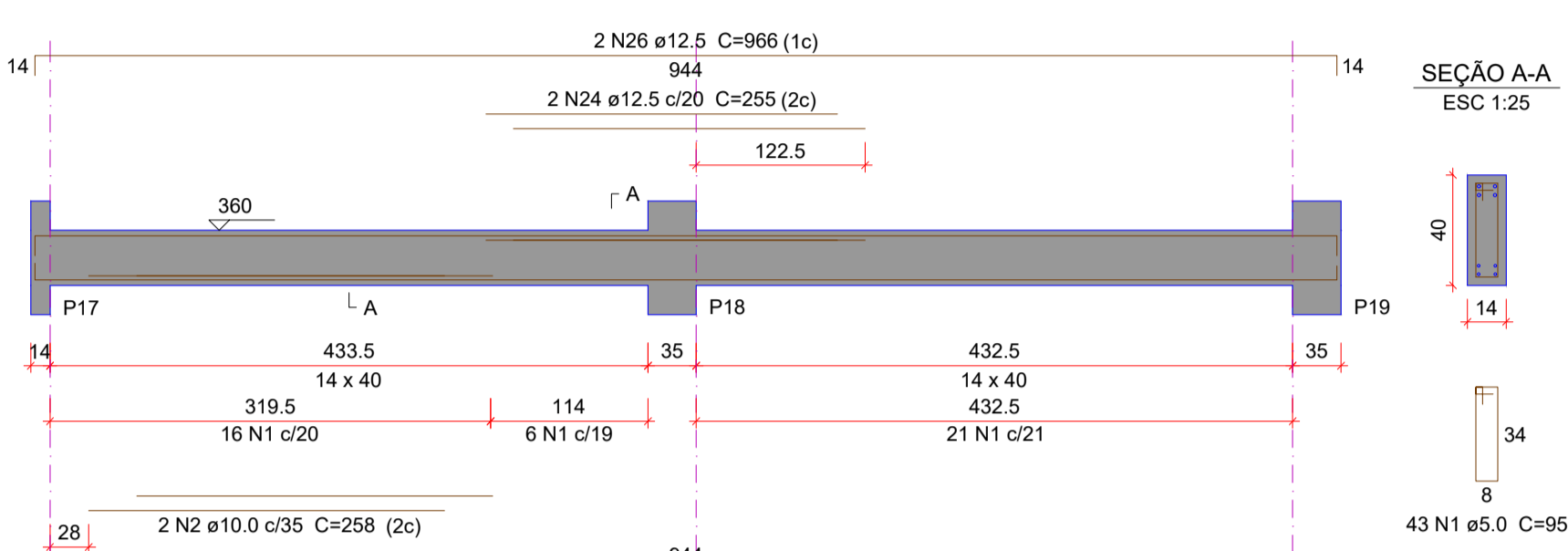
V205 (14 x 40)



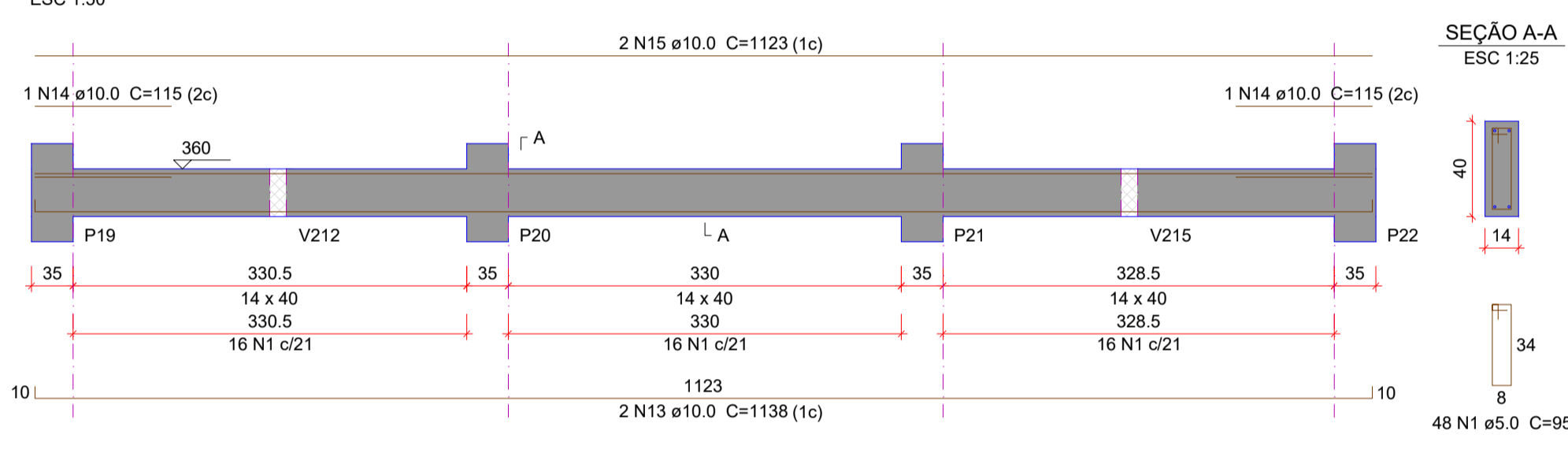
V206 (14 x 40)



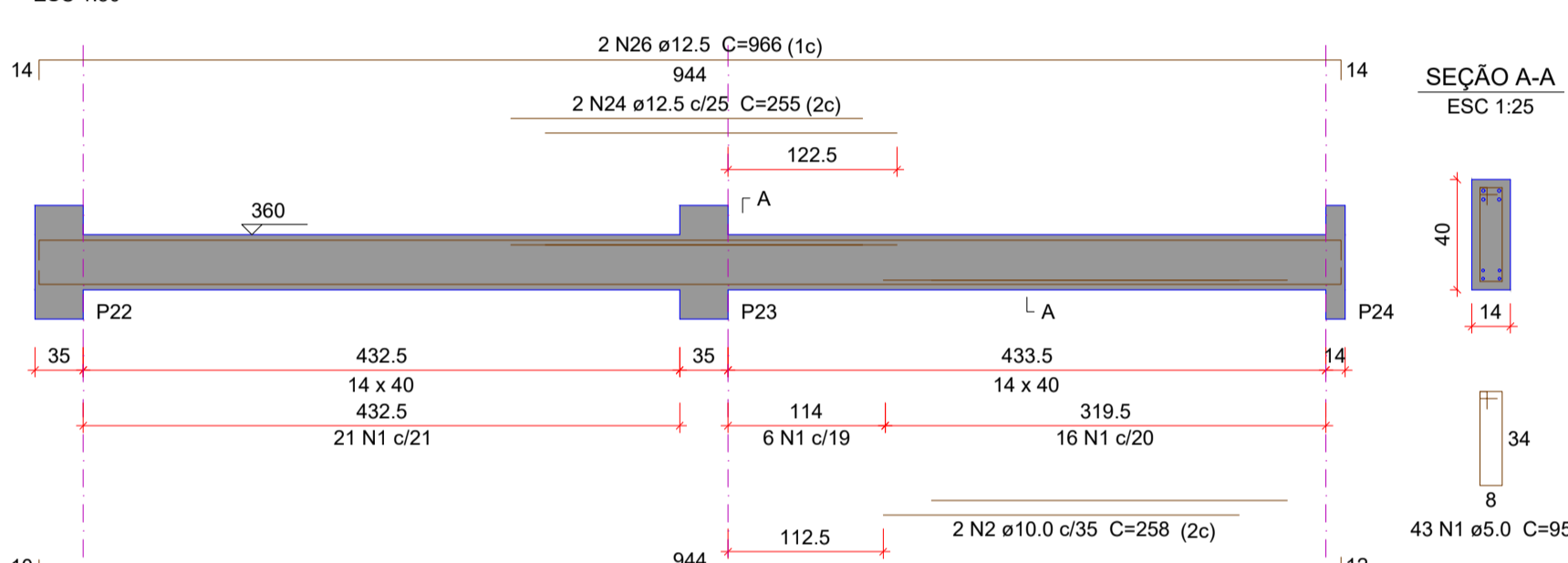
V207 (14 x 40)



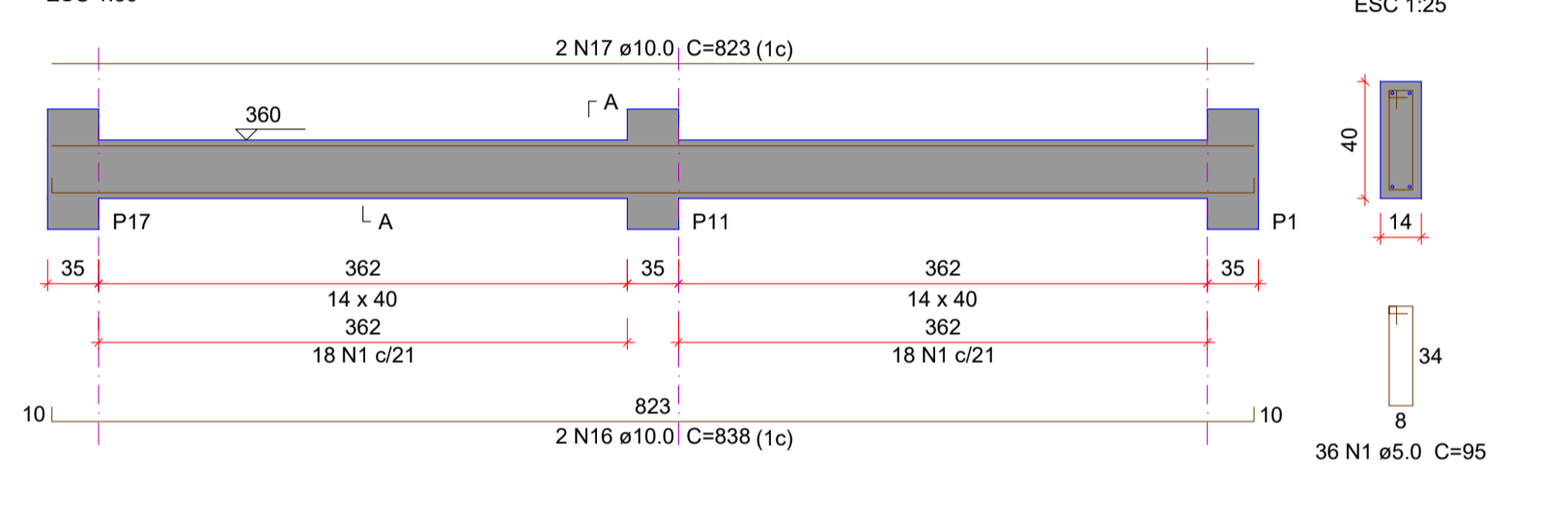
V208 (14 x 40)



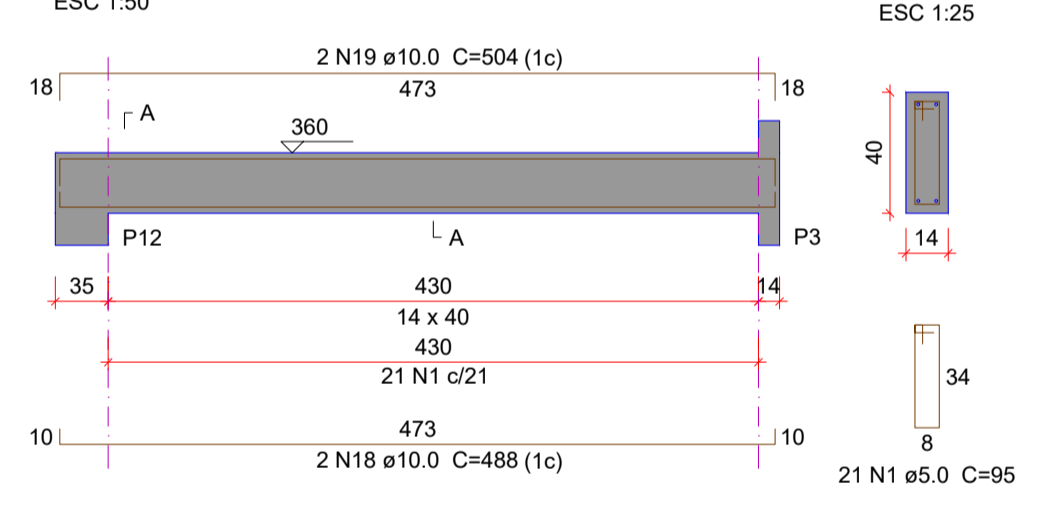
V209 (14 x 40)



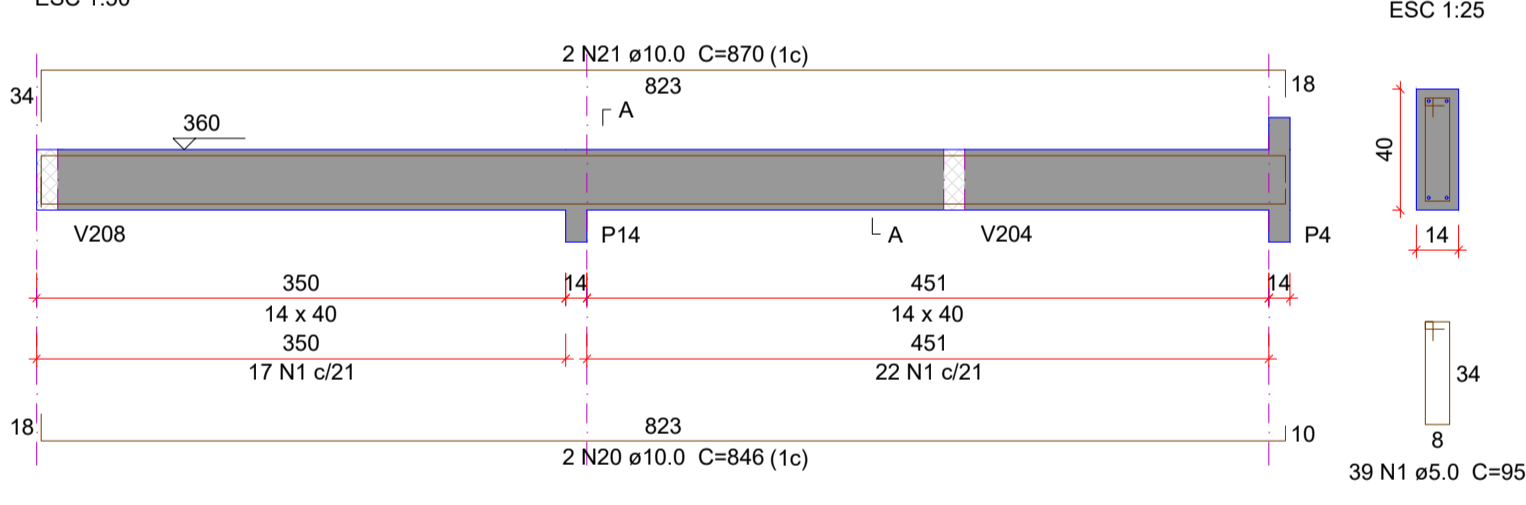
V210 (14 x 40)



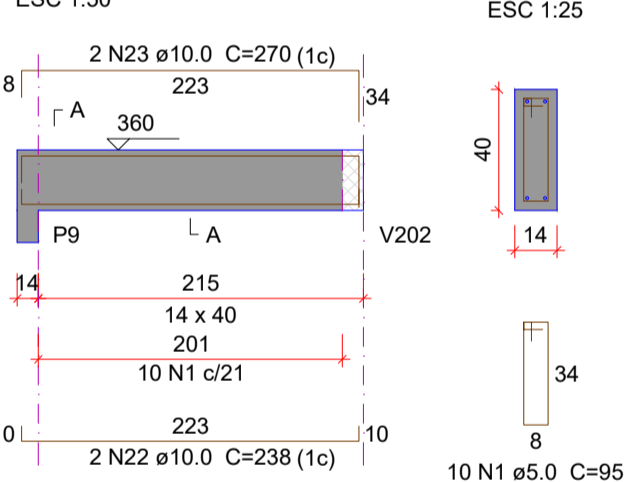
V211 (14 x 40)



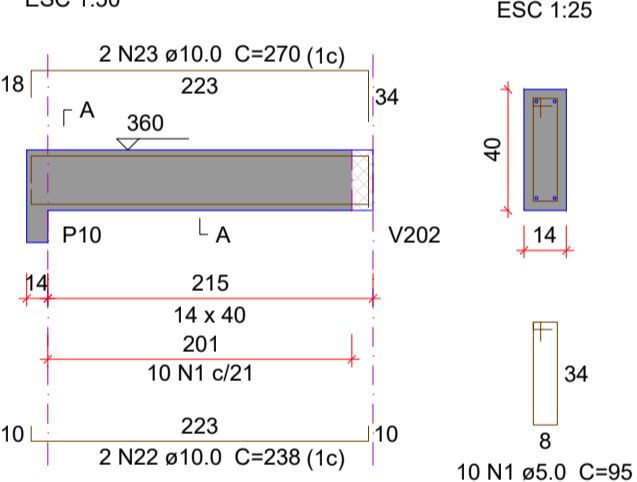
V212 (14 x 40)



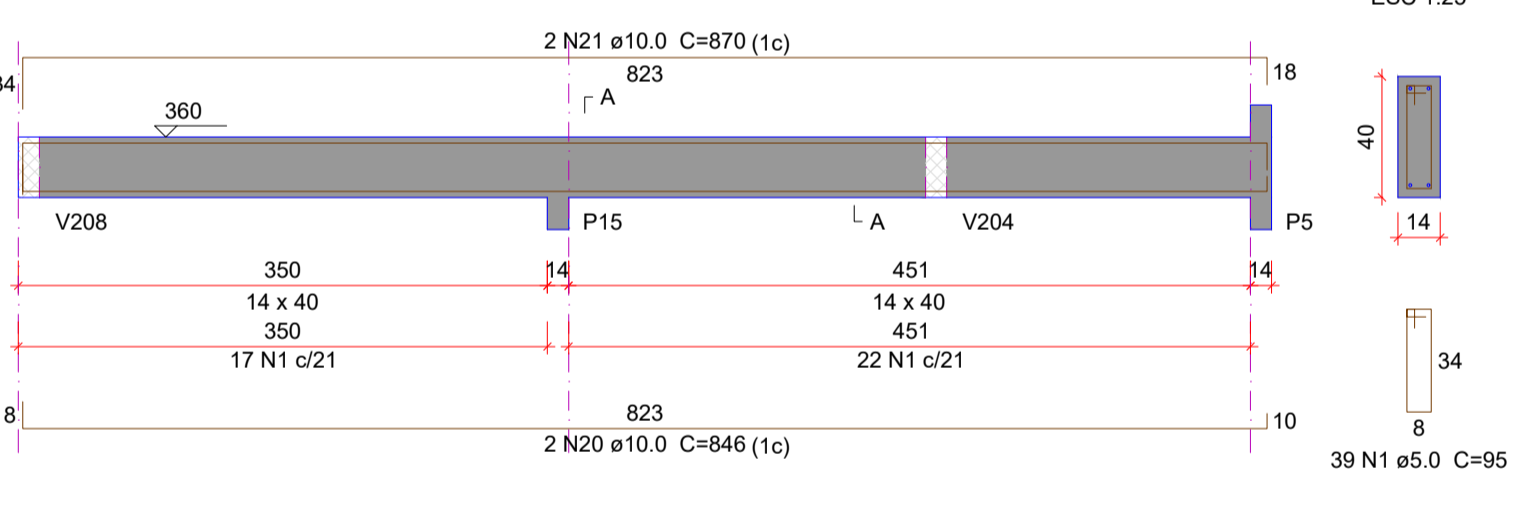
V213 (14 x 40)



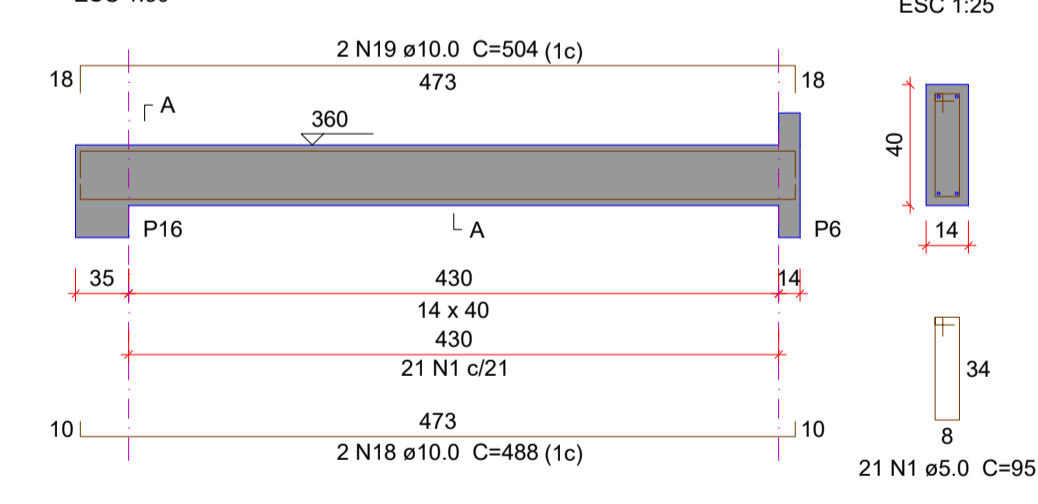
V214 (14 x 40)



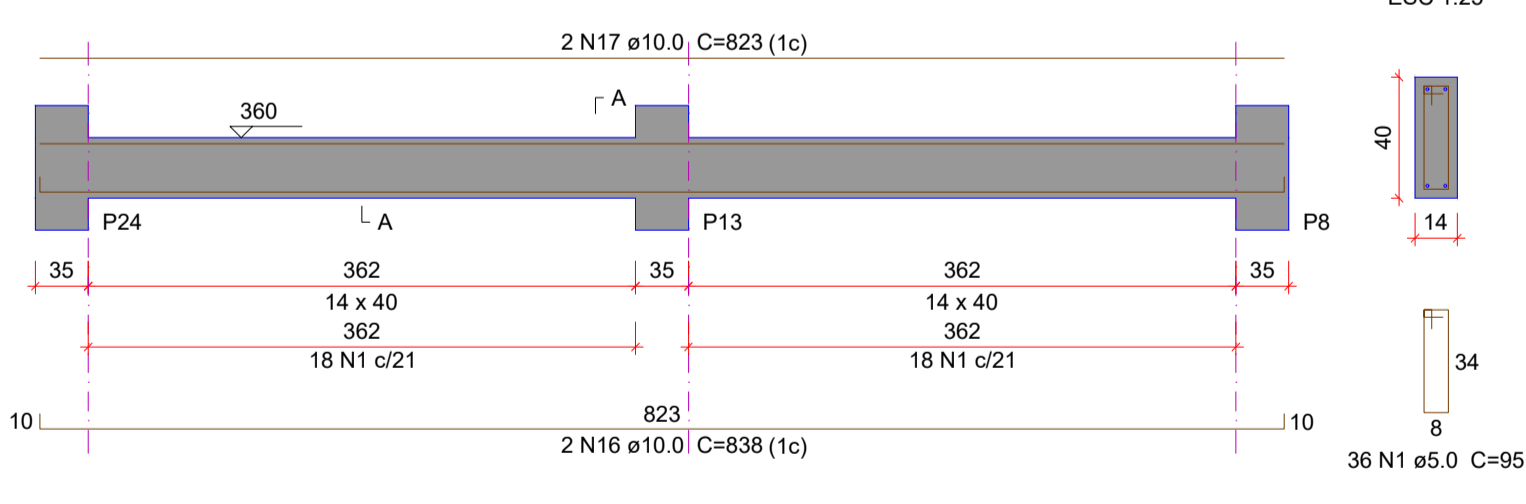
V215 (14 x 40)



V216 (14 x 40)



V217 (14 x 40)



Relação do aço

AÇO	N	DIAM (mm)	QUANT	C.UNIT (cm)	C.TOTAL (cm)
CA60	1	5.0	527	95	50065
CA50	2	10.0	8	258	2064
	3	10.0	4	940	3760
	4	10.0	2	1180	2360
	5	10.0	1	824	824
	6	10.0	2	1165	2330
	7	10.0	2	738	1476
	8	10.0	1	180	180
	9	10.0	2	786	1572
	10	10.0	4	223	892
	11	10.0	4	239	956
	12	10.0	4	961	3844
	13	10.0	2	1138	2276
	14	10.0	2	115	230
	15	10.0	2	1123	2246
	16	10.0	4	838	3352
	17	10.0	4	823	3292
	18	10.0	4	488	1952
	19	10.0	4	504	2016
	20	10.0	4	846	3384
	21	10.0	4	870	3480
	22	10.0	4	238	952
	23	10.0	4	270	1080
	24	12.5	8	255	2040
	25	12.5	4	934	3736
	26	12.5	4	966	3864

Resumo do aço

AÇO	DIAM (mm)	C.TOTAL (m)	QUANT + 10 % (Barras)	PESO + 10 % (kg)
CA50	10.0	445.2	41	301.9
	12.5	96.4	9	102.2
CA60	5.0	500.7	-	84.9
PESO TOTAL (kg)				
CA50				404.1
CA60				84.9

Volume de concreto (C-30) = 6.01 m³
Área de forma = 79.1 m²

PREFEITURA DE LAGES

PREFEITA GARMEN ZANOTTO

PREFEITURA DO MUNICÍPIO DE LAGES (SANTA CATARINA)

CNPJ 82.777.301/0001-90

RUA BENJAMIN CONSTANT - Nº 13

BAIRRO CENTRO CEP 88501-900 FONE (49) 3019-7400

SEPLAM

SECRETARIA DE PLANEJAMENTO E MOBILIDADE URBANA

RUA: ARISTILIANO RAMOS, Nº 100, BAIRRO: CENTRO CEP 88502-050, FONE (49) 3019-7548

SECRETÁRIO: MALEK RAU DABBOUS CAU- SC: A52284-8

DIRETOR: JESSICA CORSO CAU- SC: A119066-0

PROJETO: NILSON WESTPHAL JUNIOR CREA-SC: 166.077-1

DESENHO: NILSON WESTPHAL JUNIOR CREA-SC: 166.077-1

DE ACORDO RESPONSÁVEL MUNICÍPIO

PREFEITURA DO MUNICÍPIO DE LAGES CNPJ 82.777.301/0001-90

DE ACORDO RESPONSÁVEL TÉCNICO

NILSON WESTPHAL JUNIOR ENGENHEIRO CIVIL - CREA/SC 166.077-1

OBRA: SALAS DE DANÇA E APOIO - CENTRO CULTURAL

ENDEREÇO: RUA ARCHILAU BATISTA DO AMARAL, 475 - UNIVERSITÁRIO, LAGES - SC, 88511-100

DESCRIÇÃO: PROJETO ESTRUTURAL

VIGAS DA COBERTURA

NOME: EST

PRANCHA: 05/06

PRANCHA A1

DATA: 22/12/2025

ESCALA: INDICADAS

ÁREA TOTAL: 247,14m²